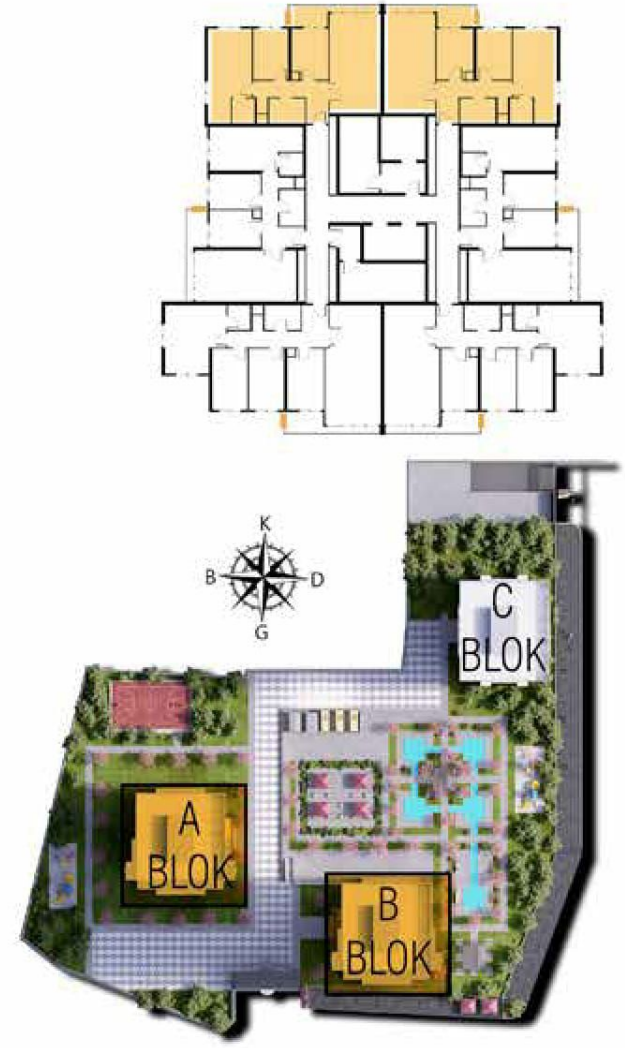


**2+1 B**

|                       |                       |
|-----------------------|-----------------------|
| Satılabilir Brüt Alan | 120.21 m <sup>2</sup> |
| Net                   | 78.84 m <sup>2</sup>  |
| Depo Net              | 4 m <sup>2</sup>      |

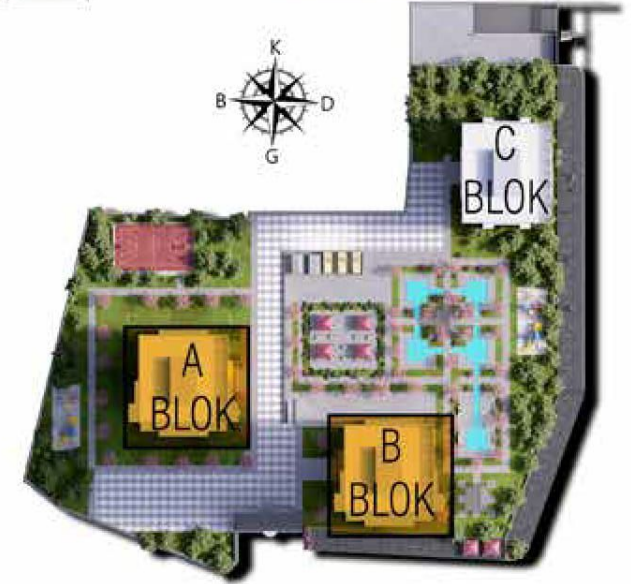
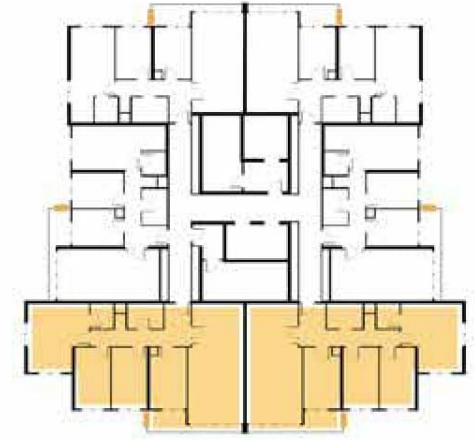
\* Yukarıdaki bulunan kat planı A ve B bloklardaki dairelere aittir.



## 2+1 A

|                       |                      |
|-----------------------|----------------------|
| Satılabilir Brüt Alan | 119.6 m <sup>2</sup> |
| Net                   | 78.44 m <sup>2</sup> |
| Depo Net              | 4 m <sup>2</sup>     |

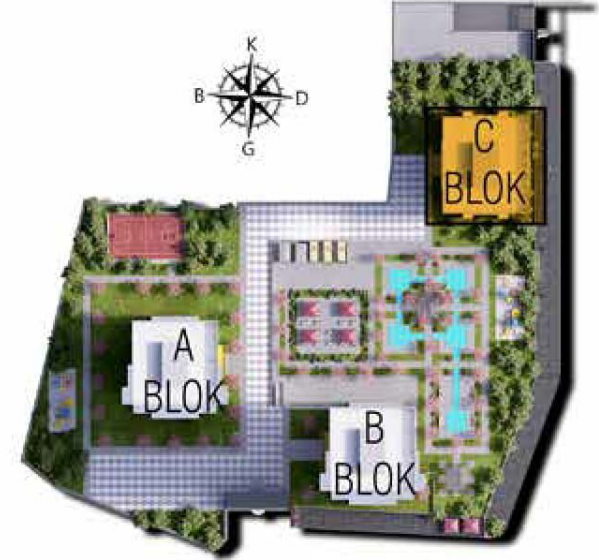
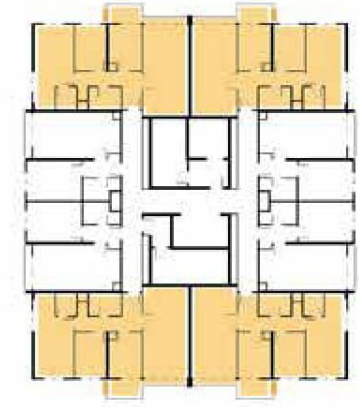
\* Yukarıdaki bulunan kat planı A ve B bloklardaki dairelere aittir.



3+1

|                       |                       |
|-----------------------|-----------------------|
| Satılabilir Brüt Alan | 154.92 m <sup>2</sup> |
| Net                   | 101.06 m <sup>2</sup> |
| Depo Net              | 4 m <sup>2</sup>      |

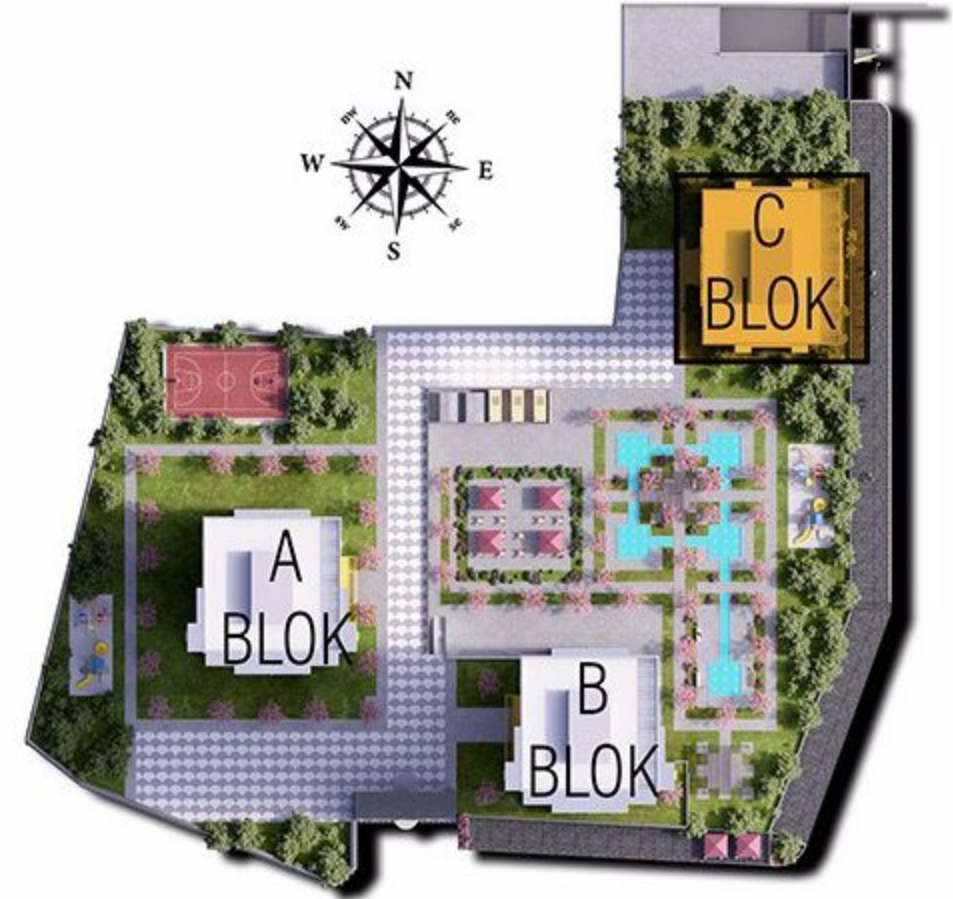
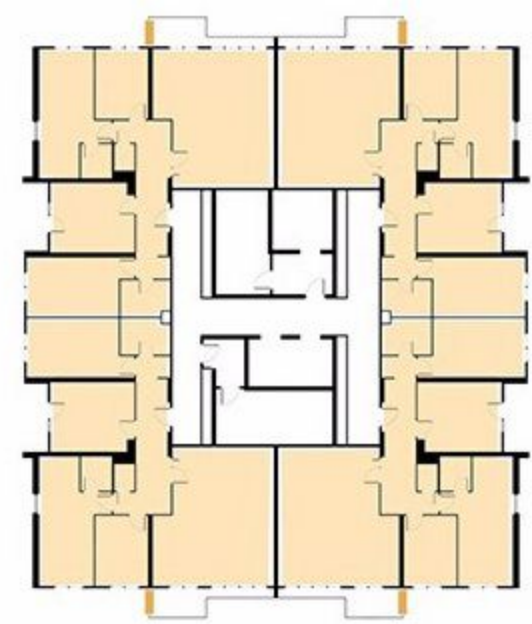
\* Yukarıdaki bulunan kat planı A ve B bloklardaki dairelere aittir.



## 2+1 C

|                       |                       |
|-----------------------|-----------------------|
| Satılabilir Brüt Alan | 120.09 m <sup>2</sup> |
| Net                   | 79.29 m <sup>2</sup>  |
| Depo Net              | 4 m <sup>2</sup>      |

\* Yukarıdaki bulunan kat planı C blokdaki dairelere aittir.



3+1 c  
net = 129,74 m<sup>2</sup>  
brüt = 197,82 m<sup>2</sup>  
Depo net alan = 4 m<sup>2</sup>

# A - BLOK

A(2+1)c  
net = 78.44 m<sup>2</sup>  
brüt = 119.60 m<sup>2</sup>

A(2+1)d  
net = 78.44 m<sup>2</sup>  
brüt = 119.60 m<sup>2</sup>

A(2+1)a  
net = 78.84 m<sup>2</sup>  
brüt = 120.21 m<sup>2</sup>

A(2+1)b  
net = 78.84 m<sup>2</sup>  
brüt = 120.21 m<sup>2</sup>

A(3+1)a  
net = 101.60 m<sup>2</sup>  
brüt = 154.92 m<sup>2</sup>

A(3+1)b  
net = 101.60 m<sup>2</sup>  
brüt = 154.92 m<sup>2</sup>

|     |     |     |
|-----|-----|-----|
| 140 | 146 | 152 |
| 122 | 128 | 134 |
| 104 | 110 | 116 |
| 86  | 92  | 98  |
| 68  | 74  | 80  |
| 50  | 56  | 62  |
| 32  | 38  | 44  |
| 14  | 20  | 26  |
| -   | -   | 8   |

|     |     |     |
|-----|-----|-----|
| 139 | 145 | 151 |
| 121 | 127 | 133 |
| 103 | 109 | 115 |
| 85  | 91  | 97  |
| 67  | 73  | 79  |
| 49  | 55  | 61  |
| 31  | 37  | 43  |
| 13  | 19  | 25  |
| -   | -   | 7   |

|     |     |     |
|-----|-----|-----|
| 141 | 147 | 153 |
| 123 | 129 | 135 |
| 105 | 111 | 117 |
| 87  | 93  | 99  |
| 69  | 75  | 81  |
| 51  | 57  | 63  |
| 33  | 39  | 45  |
| 15  | 21  | 27  |
| -   | -   | 9   |

|     |     |     |
|-----|-----|-----|
| 138 | 144 | 150 |
| 120 | 126 | 132 |
| 102 | 108 | 114 |
| 84  | 90  | 96  |
| 66  | 72  | 78  |
| 48  | 54  | 60  |
| 30  | 36  | 42  |
| 12  | 18  | 24  |
| -   | -   | 6   |

|     |     |     |
|-----|-----|-----|
| 142 | 148 | 154 |
| 124 | 130 | 136 |
| 106 | 112 | 118 |
| 88  | 94  | 100 |
| 70  | 76  | 82  |
| 52  | 58  | 64  |
| 34  | 40  | 46  |
| 16  | 22  | 28  |
| -   | -   | 10  |

|     |     |     |
|-----|-----|-----|
| 137 | 143 | 149 |
| 119 | 125 | 131 |
| 101 | 107 | 113 |
| 83  | 89  | 95  |
| 65  | 71  | 77  |
| 47  | 53  | 59  |
| 29  | 35  | 41  |
| 11  | 17  | 23  |
| -   | -   | 5   |



# B - BLOK

B(2+1)c  
net = 78.44 m<sup>2</sup>  
brüt = 119.60 m<sup>2</sup>

B(2+1)d  
net = 78.44 m<sup>2</sup>  
brüt = 119.60 m<sup>2</sup>

B(2+1)a  
net = 78.84 m<sup>2</sup>  
brüt = 120.21 m<sup>2</sup>

B(2+1)b  
net = 78.84 m<sup>2</sup>  
brüt = 120.21 m<sup>2</sup>

B(3+1)a  
net = 101.60 m<sup>2</sup>  
brüt = 154.92 m<sup>2</sup>

B(3+1)b  
net = 101.60 m<sup>2</sup>  
brüt = 154.92 m<sup>2</sup>

|     |     |     |
|-----|-----|-----|
| 141 | 147 | 153 |
| 123 | 129 | 135 |
| 105 | 111 | 117 |
| 87  | 93  | 99  |
| 69  | 75  | 81  |
| 51  | 57  | 63  |
| 33  | 39  | 45  |
| 15  | 21  | 27  |
|     | 5   | 9   |

|     |     |     |
|-----|-----|-----|
| 140 | 146 | 152 |
| 122 | 128 | 134 |
| 104 | 110 | 116 |
| 86  | 92  | 98  |
| 68  | 74  | 80  |
| 50  | 56  | 62  |
| 32  | 38  | 44  |
| 14  | 20  | 26  |
|     | 4   | 8   |

|     |     |     |
|-----|-----|-----|
| 142 | 148 | 154 |
| 124 | 130 | 136 |
| 106 | 112 | 118 |
| 88  | 94  | 100 |
| 70  | 76  | 82  |
| 52  | 58  | 64  |
| 34  | 40  | 46  |
| 16  | 22  | 28  |
| -   |     | 10  |

|     |     |     |
|-----|-----|-----|
| 139 | 145 | 151 |
| 121 | 127 | 133 |
| 103 | 109 | 115 |
| 85  | 91  | 97  |
| 67  | 73  | 79  |
| 49  | 55  | 61  |
| 31  | 37  | 43  |
| 13  | 19  | 25  |
|     | 3   | 7   |

|     |     |     |
|-----|-----|-----|
| 143 | 149 | 155 |
| 125 | 131 | 137 |
| 107 | 113 | 119 |
| 89  | 95  | 101 |
| 71  | 77  | 83  |
| 53  | 59  | 65  |
| 35  | 41  | 47  |
| 17  | 23  | 29  |
|     | 1   | 11  |

|     |     |     |
|-----|-----|-----|
| 138 | 144 | 150 |
| 120 | 126 | 132 |
| 102 | 108 | 114 |
| 84  | 90  | 96  |
| 66  | 72  | 78  |
| 48  | 54  | 60  |
| 30  | 36  | 42  |
| 12  | 18  | 24  |
|     | 2   | 6   |



# C - BLOK

C(2+1)a  
net = 79.29 m<sup>2</sup>  
brüt = 120.90 m<sup>2</sup>

C(2+1)b  
net = 79.29 m<sup>2</sup>  
brüt = 120.90 m<sup>2</sup>

|     |     |     |
|-----|-----|-----|
| 170 | 178 | 186 |
| 146 | 154 | 162 |
| 122 | 130 | 138 |
| 98  | 106 | 114 |
| 74  | 82  | 90  |
| 50  | 58  | 66  |
| 26  | 34  | 42  |
| -   | 10  | 18  |

|     |     |     |
|-----|-----|-----|
| 169 | 177 | 185 |
| 145 | 153 | 161 |
| 121 | 129 | 137 |
| 97  | 105 | 113 |
| 73  | 81  | 89  |
| 49  | 57  | 65  |
| 25  | 33  | 41  |
| 5   | 9   | 17  |

|     |     |     |
|-----|-----|-----|
| 171 | 179 | 187 |
| 147 | 155 | 163 |
| 123 | 131 | 139 |
| 99  | 107 | 115 |
| 75  | 83  | 91  |
| 51  | 59  | 67  |
| 27  | 35  | 43  |
| -   | 11  | 19  |

|     |     |     |
|-----|-----|-----|
| 168 | 176 | 184 |
| 144 | 152 | 160 |
| 120 | 128 | 136 |
| 96  | 104 | 112 |
| 72  | 80  | 88  |
| 48  | 56  | 64  |
| 24  | 32  | 40  |
| 4   | 8   | 16  |

C(1+1)a  
net = 45.03 m<sup>2</sup>  
brüt = 68.66 m<sup>2</sup>

C(1+1)c  
net = 45.03 m<sup>2</sup>  
brüt = 68.66 m<sup>2</sup>

C(1+1)b  
net = 45.03 m<sup>2</sup>  
brüt = 68.66 m<sup>2</sup>

C(1+1)d  
net = 45.03 m<sup>2</sup>  
brüt = 68.66 m<sup>2</sup>

|     |     |     |
|-----|-----|-----|
| 172 | 180 | 188 |
| 148 | 156 | 164 |
| 124 | 132 | 140 |
| 100 | 108 | 116 |
| 76  | 84  | 92  |
| 52  | 60  | 68  |
| 28  | 36  | 44  |
| -   | 12  | 20  |

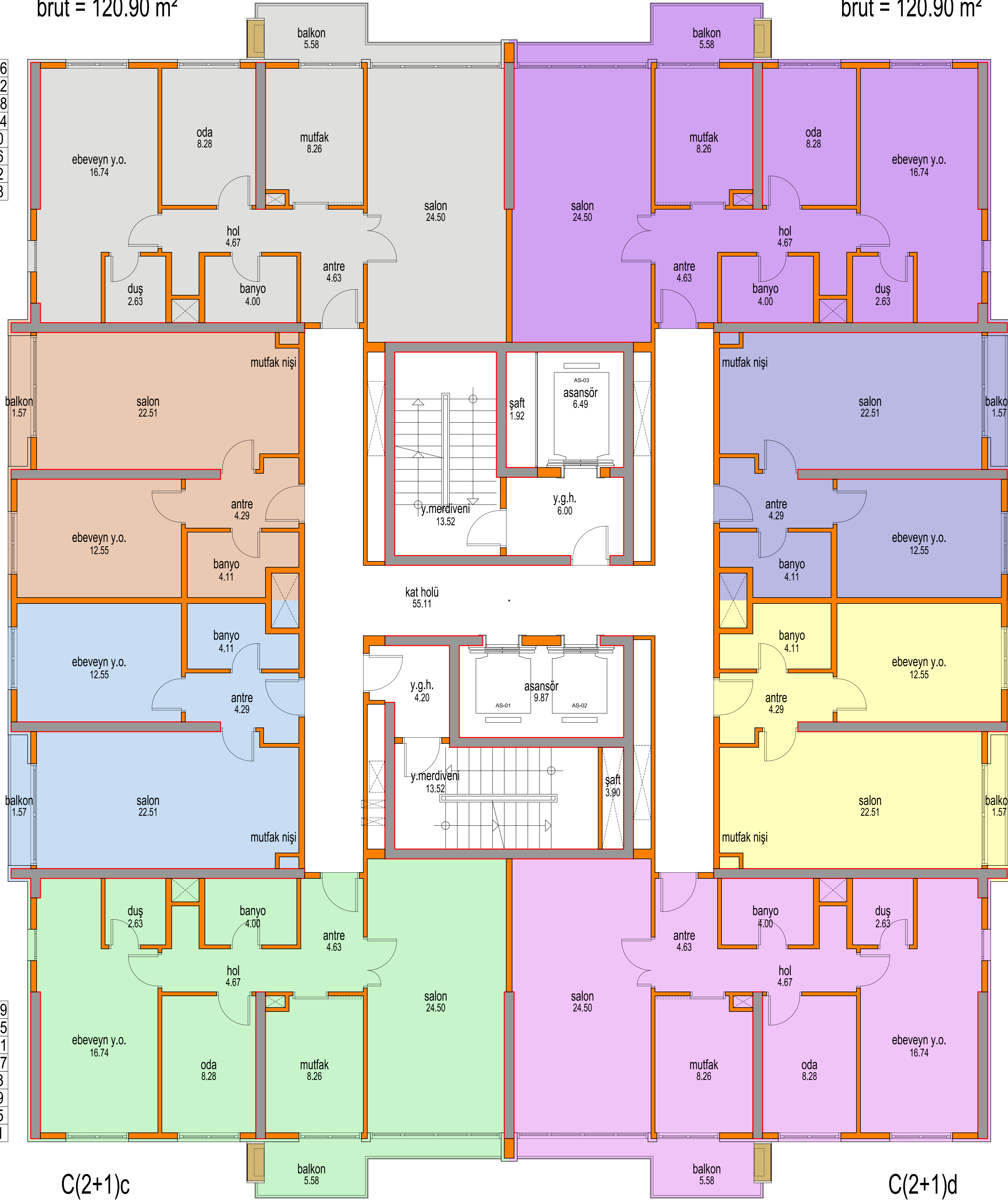
|     |     |     |
|-----|-----|-----|
| 167 | 175 | 183 |
| 143 | 151 | 159 |
| 119 | 127 | 135 |
| 95  | 103 | 111 |
| 71  | 79  | 87  |
| 47  | 55  | 63  |
| 23  | 31  | 39  |
| 3   | 7   | 15  |

|     |     |     |
|-----|-----|-----|
| 173 | 181 | 189 |
| 149 | 157 | 165 |
| 125 | 133 | 141 |
| 101 | 109 | 117 |
| 77  | 85  | 93  |
| 53  | 61  | 69  |
| 29  | 37  | 45  |
| 1   | 13  | 21  |

|     |     |     |
|-----|-----|-----|
| 166 | 174 | 182 |
| 142 | 150 | 158 |
| 118 | 126 | 134 |
| 94  | 102 | 110 |
| 70  | 78  | 86  |
| 46  | 54  | 62  |
| 22  | 30  | 38  |
| 2   | 6   | 14  |

C(2+1)c  
net = 79.29 m<sup>2</sup>  
brüt = 120.90 m<sup>2</sup>

C(2+1)d  
net = 79.29 m<sup>2</sup>  
brüt = 120.90 m<sup>2</sup>





# A - BLOK

