

ISTANBUL



**Residential Project With Highest
Potential Revenues In The District**
According to Forbes Turkey research



“ “ I want a living space ” ”

in the center of Istanbul city
but far from the stress of the metropolis

with rich social possibilities
and suitable location opportunities

presenting both a happy and peaceful life for
my family and it should be an investment
with profitability

one does not purchase a house every day
if it should be, let it be this way

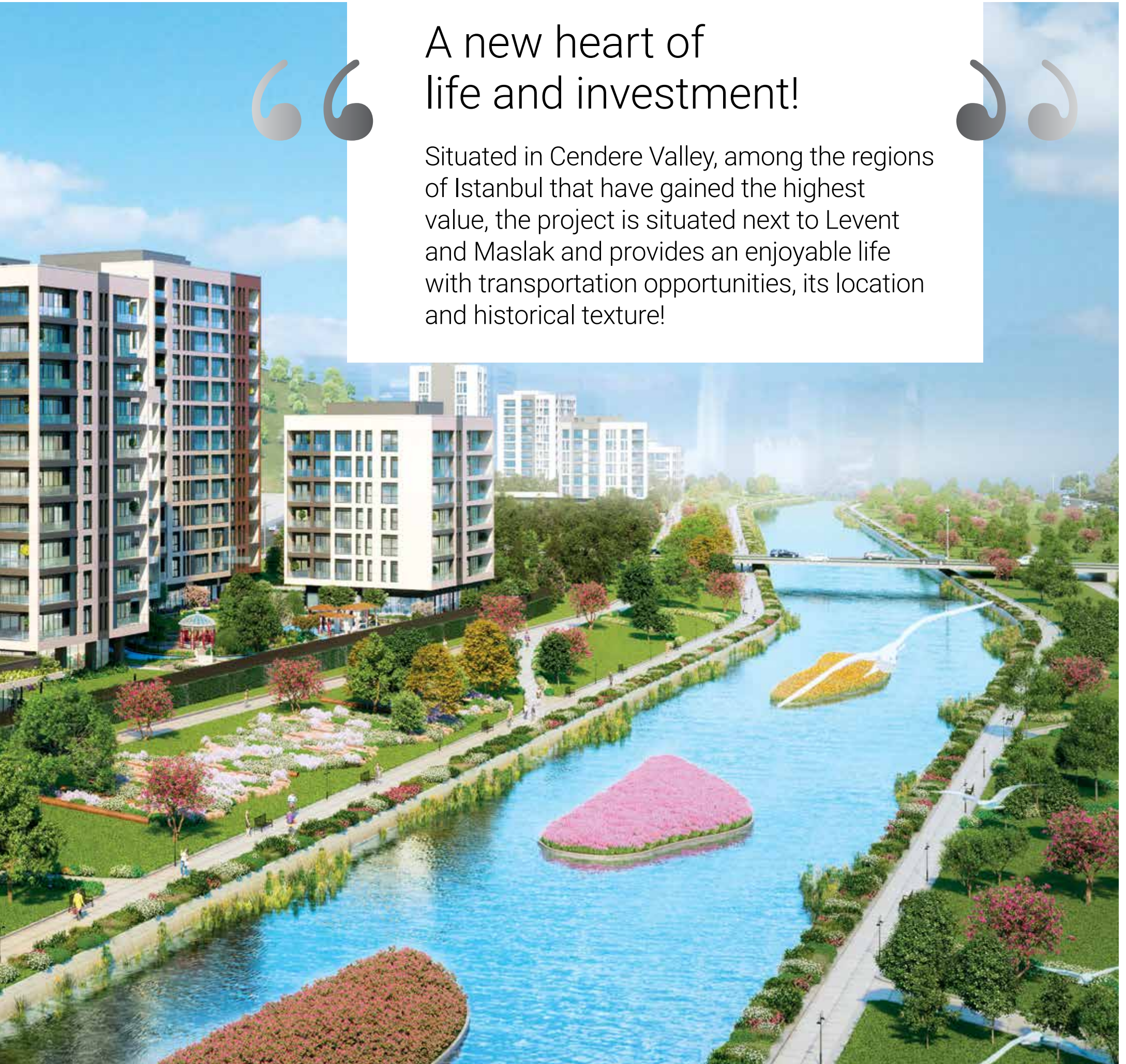
do I want too much?





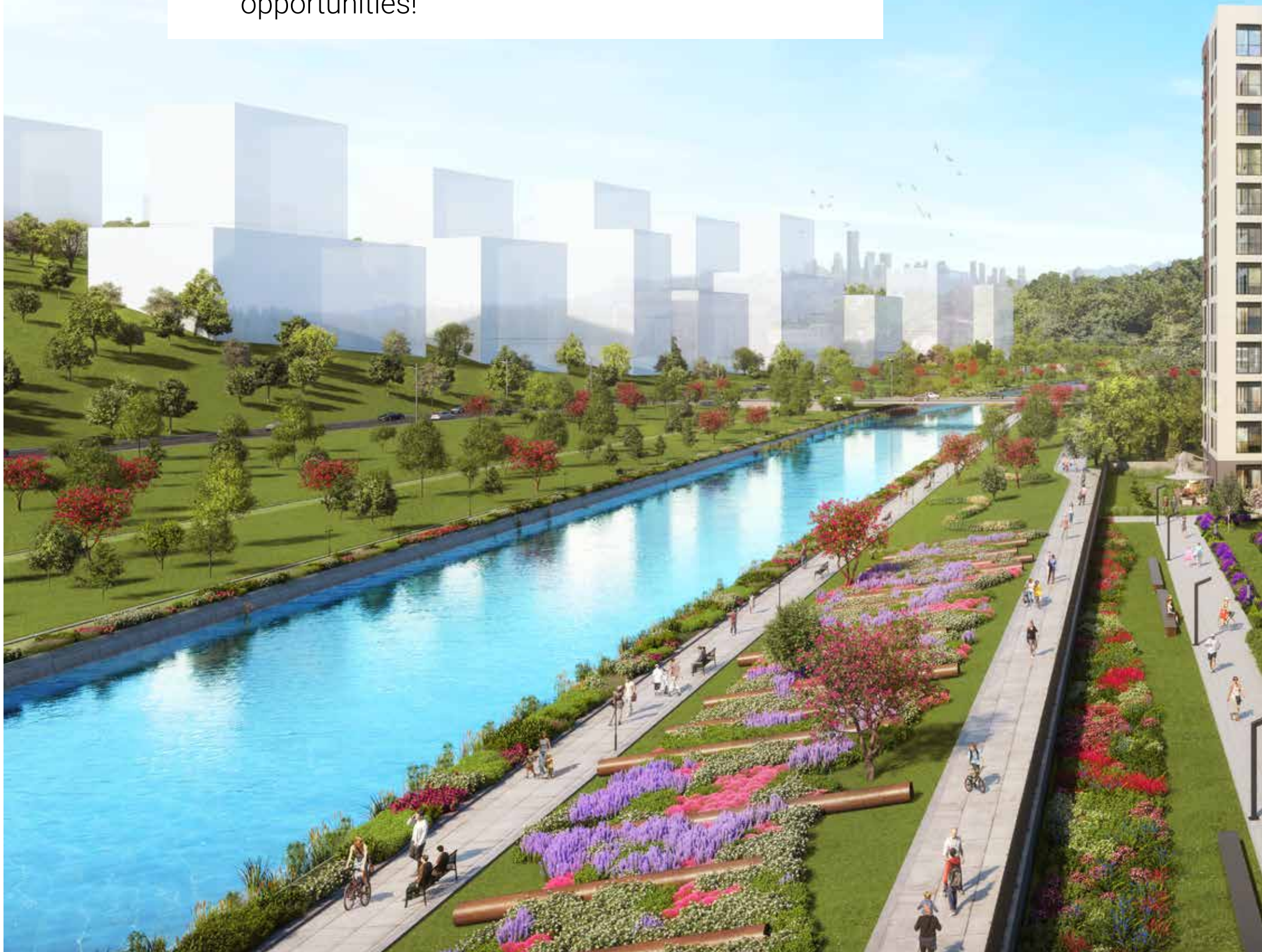
A new heart of life and investment!

Situated in Cendere Valley, among the regions of Istanbul that have gained the highest value, the project is situated next to Levent and Maslak and provides an enjoyable life with transportation opportunities, its location and historical texture!





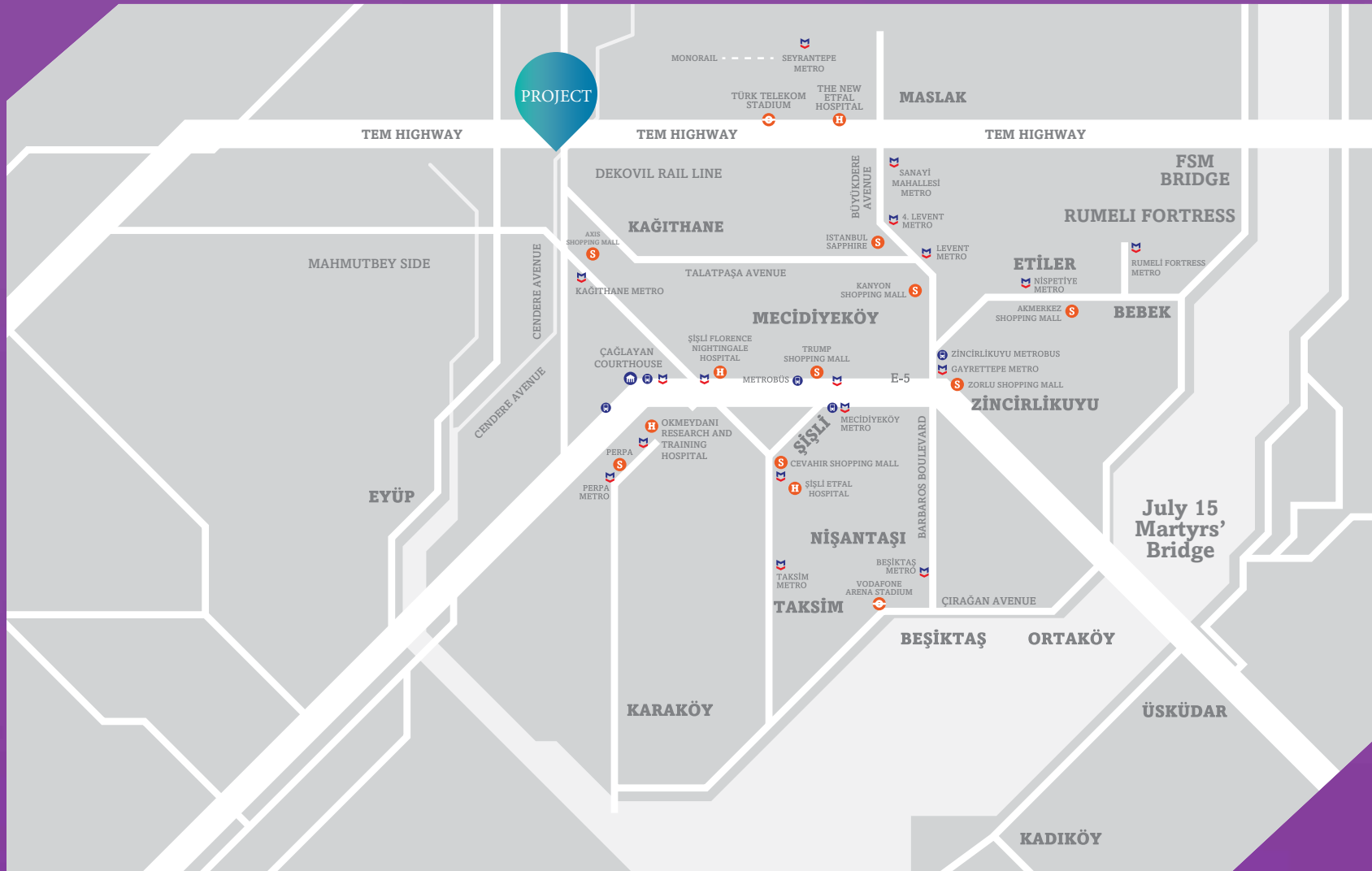
The project attracts attention with its close location to shopping malls, event and art centers, health facilities, and transportation and education centers. So, this is the prize possession for those who seek both life and investment opportunities!











You will be both in the heart of the city and the center of life with private schools, shopping malls, universities and hospitals surrounding the project.

Transportation Opportunities

- TEM and D-100 Highway Connections
- Kağıthane Metro Station
- Dekovil Rail Line
- Ayazağa Monorail
- Easy Access to the Bridges
- Access to the Big İstanbul Tunnel
- İstanbul Airport

- Seyrantepe Metro **4 km**
- Maslak **5 km**
- Mecidiyeköy **5 km**
- Levent **5,5 km**
- Taksim **9 km**
- Beşiktaş **12 km**
- İstanbul Airport **30 km**

Universities

- Next to İstanbul Atlas University*
- Beykent University **4 km**
- İstanbul Bilgi University **5,8 km**
- İstanbul Technical University **6 km**
- Nişantaşı University **6,8 km**
- Haliç University **7,4 km**
- İstanbul Commerce University **7,7 km**

Hospitals

- Derindere Hospital **2,5 km**
- The New Şişli Etfal Hospital **4 km**
- Kağıthane State Hospital **4,5 km**
- Florence Nightingale Hospital **5 km**
- Okmeydanı Research and Training Hospital **5,3 km**
- Acıbadem Hospital **7,8 km**

Shopping Malls

- Axis Shopping Mall **1,9 km**
- Vadistanbul Shopping Mall **2,2 km**
- İstanbul Sapphire Shopping Mall **4,9 km**
- Metrocity Shopping Mall **5,5 km**
- Özdilek Shopping Mall **5,8 km**
- Cevahir Shopping Mall **5,8 km**
- Kanyon Shopping Mall **5,9 km**
- İstinyePark Shopping Mall **7,4 km**
- Zorlu Center Shopping Mall **7,5 km**

* İstanbul Atlas University has been scheduled to commence education in 2019-2020 academic year.



BEYKENT AYAZAĞA CAMPUS



İSTİNYEPARK
SHOPPING MALL



VADİSTANBUL
SHOPPING MALL



İTÜ AYAZAĞA CAMPUS



AXIS SHOPPING
MALL



KANYON
SHOPPING MALL



MEF UNIVERSITY



UNIQ İSTANBUL



THE NEW ETFAL HOSPITAL



ZORLU CENTER
SHOPPING MALL



GROVE

GÜZELBAHÇE

E

A

B

C

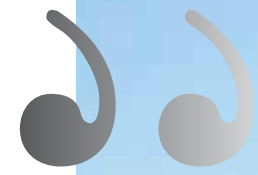
D

KORDONBOYU





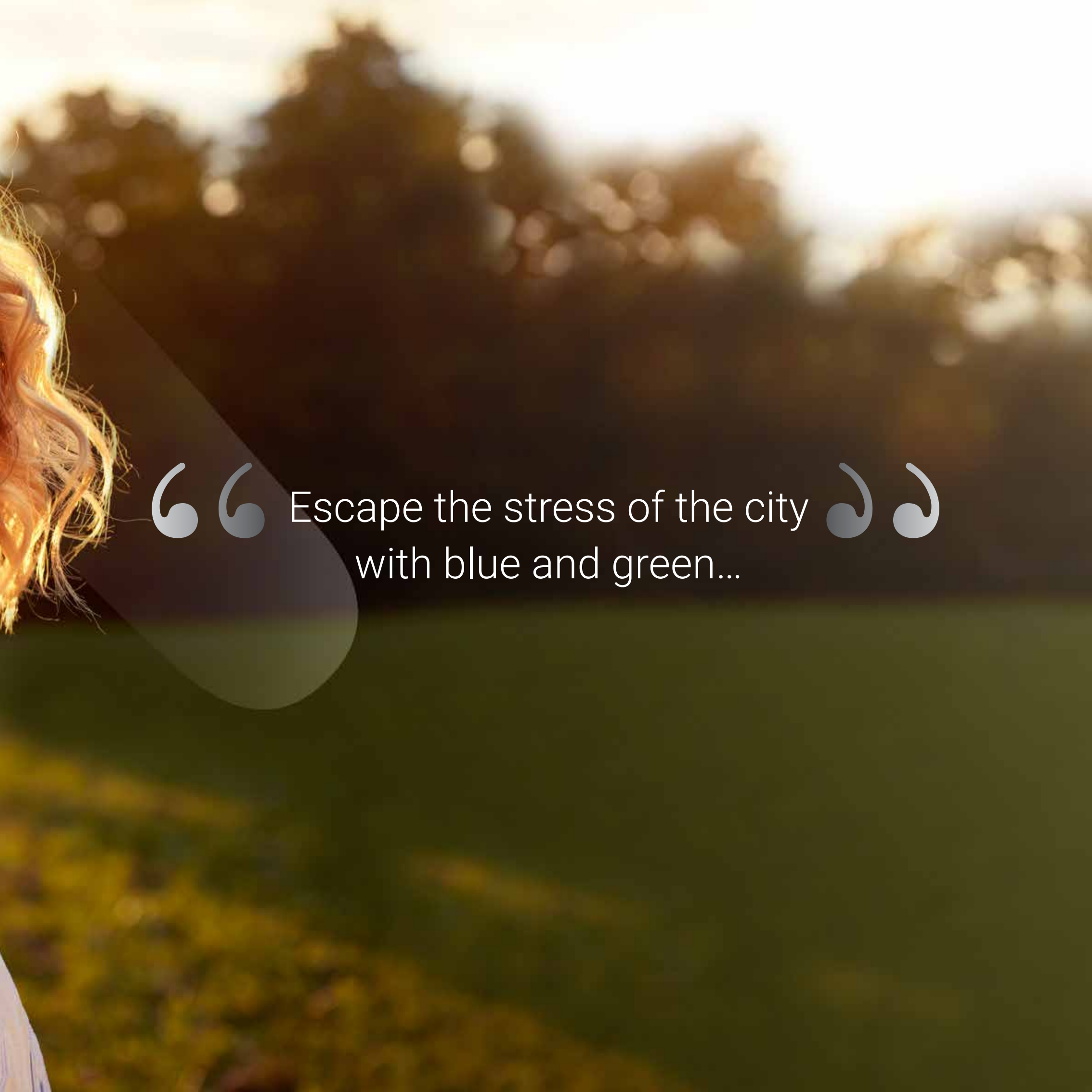
An architecture in harmony with the nature



Colorful landscapes, ponds, walking and cycle tracks and unique beauties uniting blue and green...The project offers matchless recreation and entertainment areas in the city for the residents!







“ “ Escape the stress of the city “ “
with blue and green...

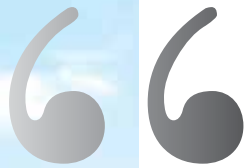




Have a walk in the morning in the Zen Gardens amid the smell of lavenders or enjoy a peaceful evening in gazebos with the extraordinary pond view...



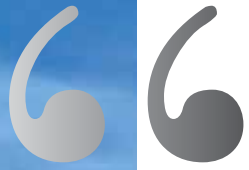




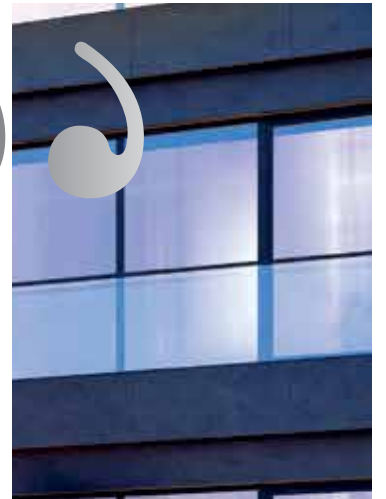
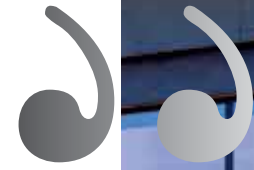
In the privileged world of the project with 72% of landscape, I have so many alternatives to rest my soul and body!
Even though I live in the heart of Istanbul, there is no trace of the stress of the city among blue and green.







The project presents a waterside life in green with innovatively designed houses, unique landscape areas, restaurants and cafés where you will share the best moments, shopping street, rich social facilities and instant pleasures!





Everything I need is within
arm's reach at any time...



- Art Studios
- Private Movie Houses
- Meeting Rooms
- Library
- Karaoke Room
- Music Studio
- Children's Play Club
- Hobby Rooms
- Guest House



Techesque

Plume

Transmod

Café
ESPRESSO

“

I don't need any more to wait for the weekend for shopping. I am free to shop any time with the rich opportunities of the shopping street near my house where I can find everything I want.

”



“ “ A life in which we can spare time to our pleasures... ” ”

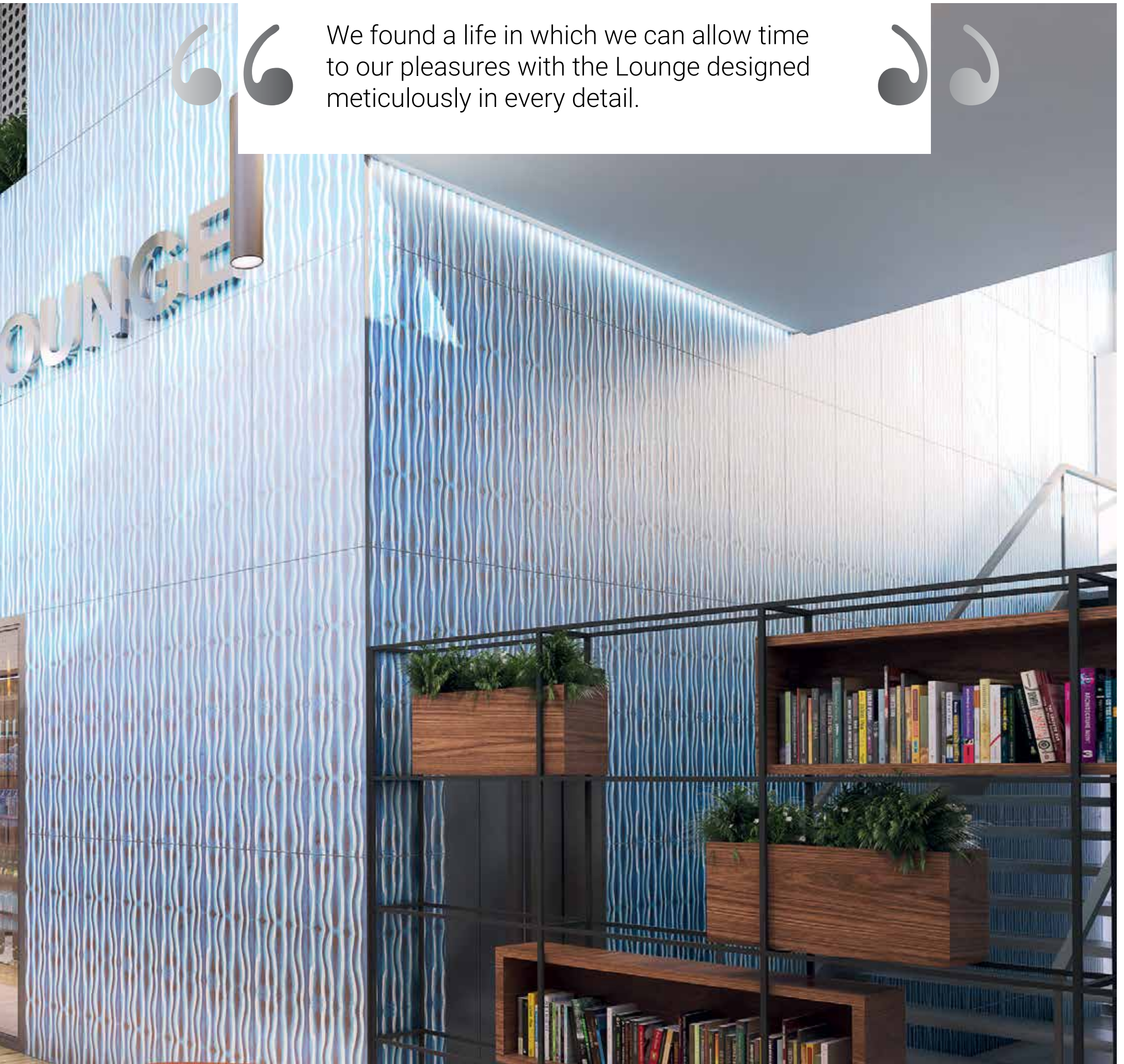






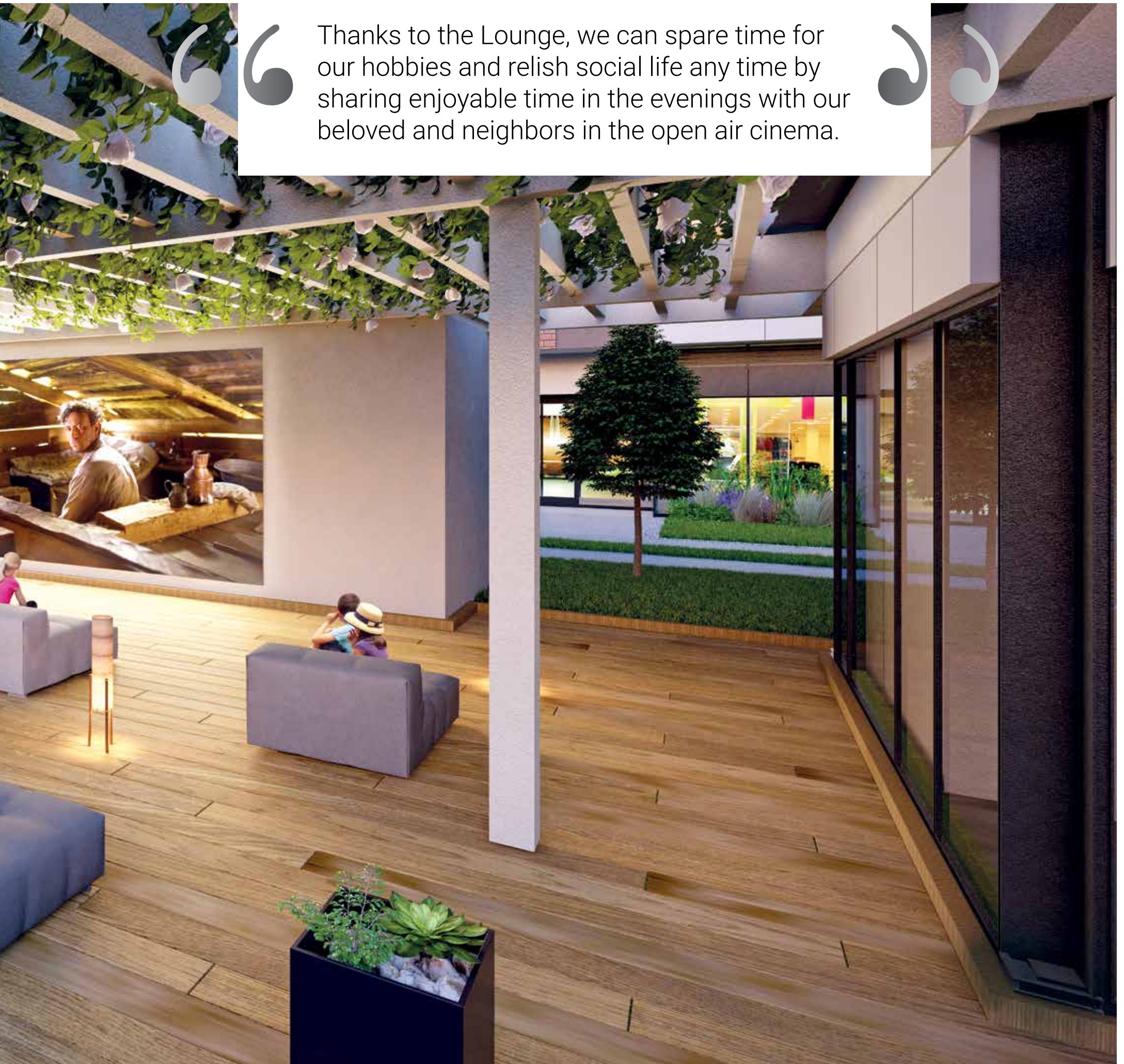


We found a life in which we can allow time to our pleasures with the Lounge designed meticulously in every detail.





Thanks to the Lounge, we can spare time for our hobbies and relish social life any time by sharing enjoyable time in the evenings with our beloved and neighbors in the open air cinema.

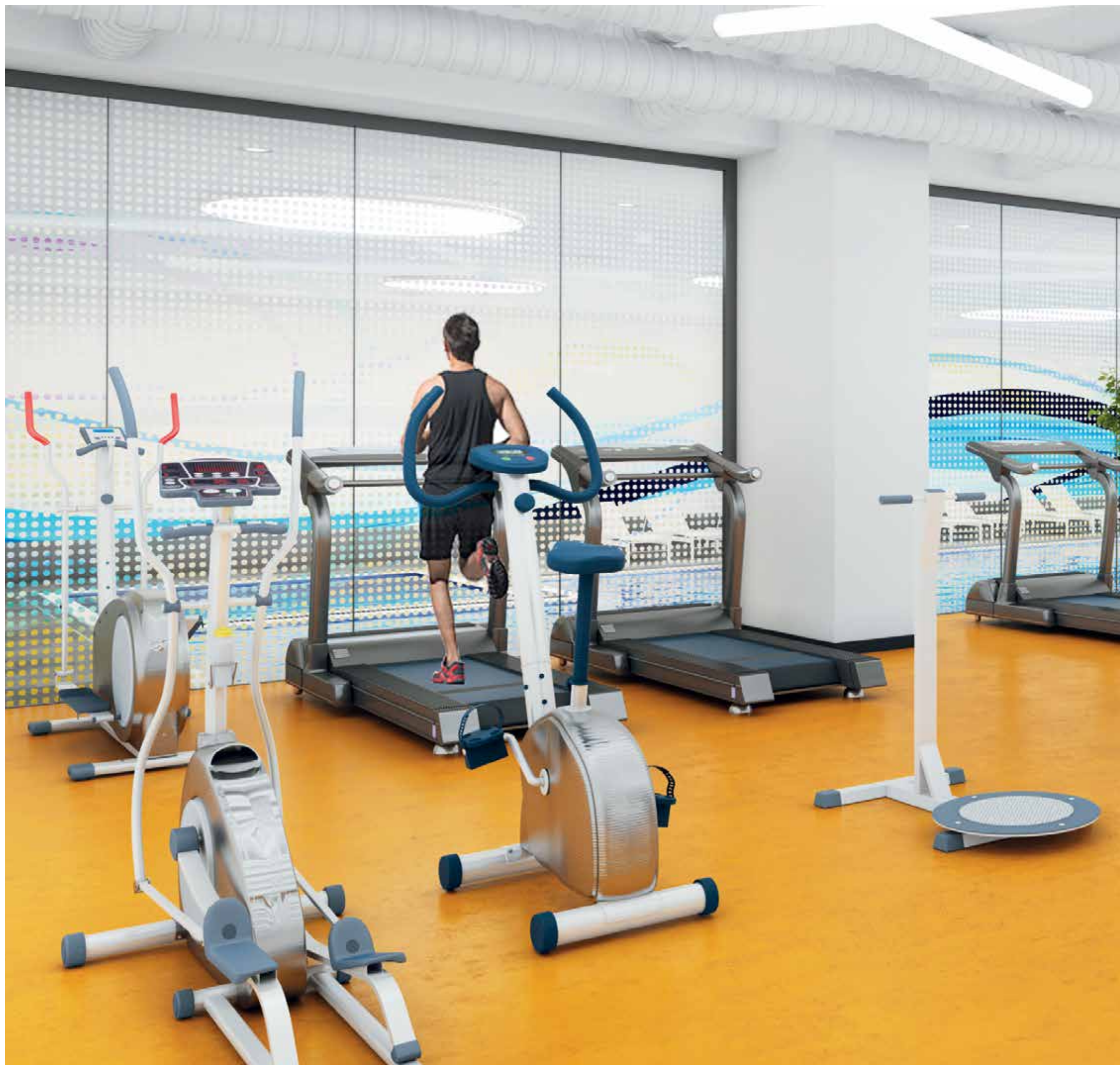






Entertainment and
health are now
inseparable parts of
our lives...



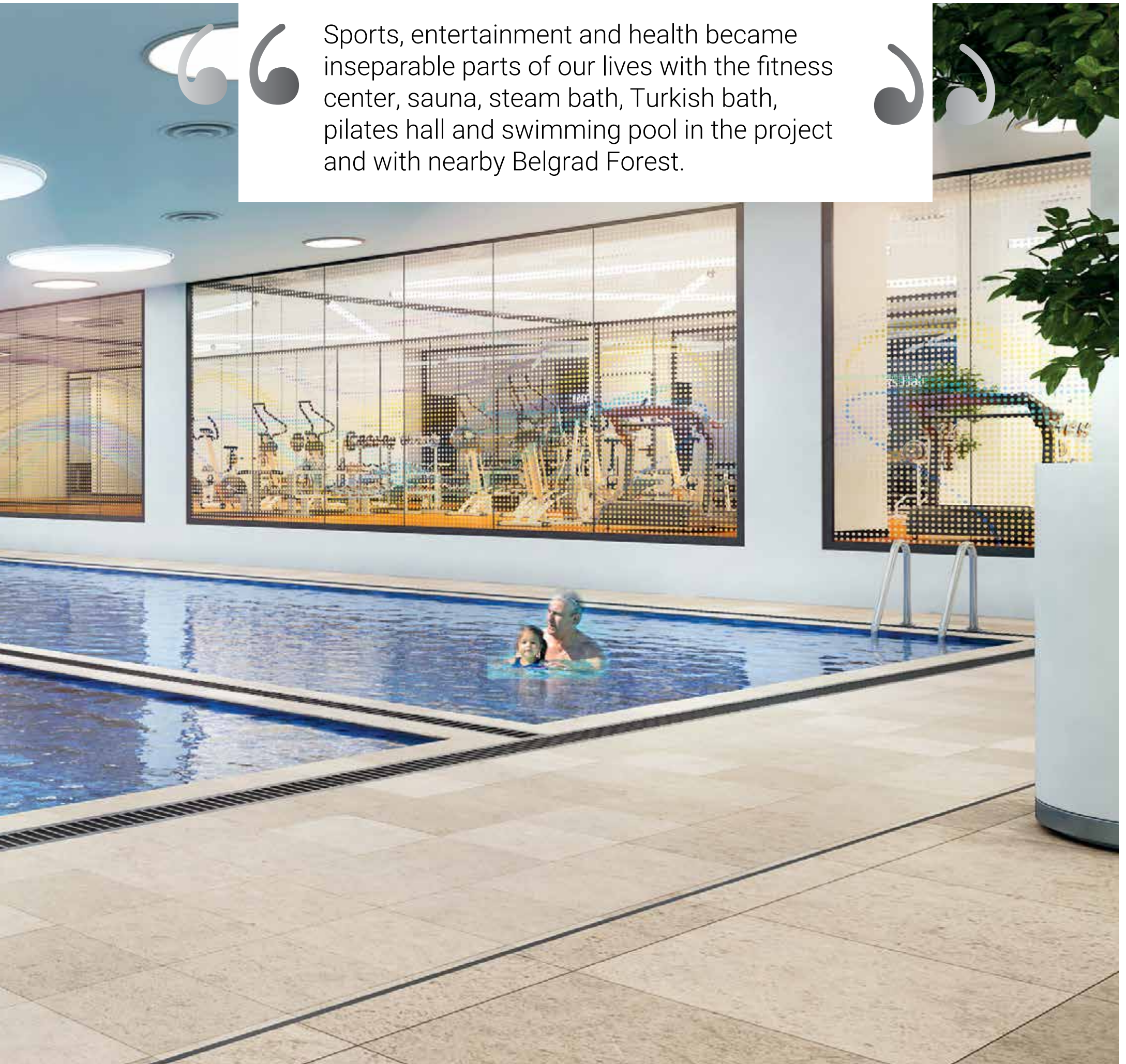


“ It seemed to us that it was impossible to have fun, socialize and do sports in the rush of everyday life. We have realized how easy they were when we started to live in this project. ”





“ Sports, entertainment and health became inseparable parts of our lives with the fitness center, sauna, steam bath, Turkish bath, pilates hall and swimming pool in the project and with nearby Belgrad Forest. ”



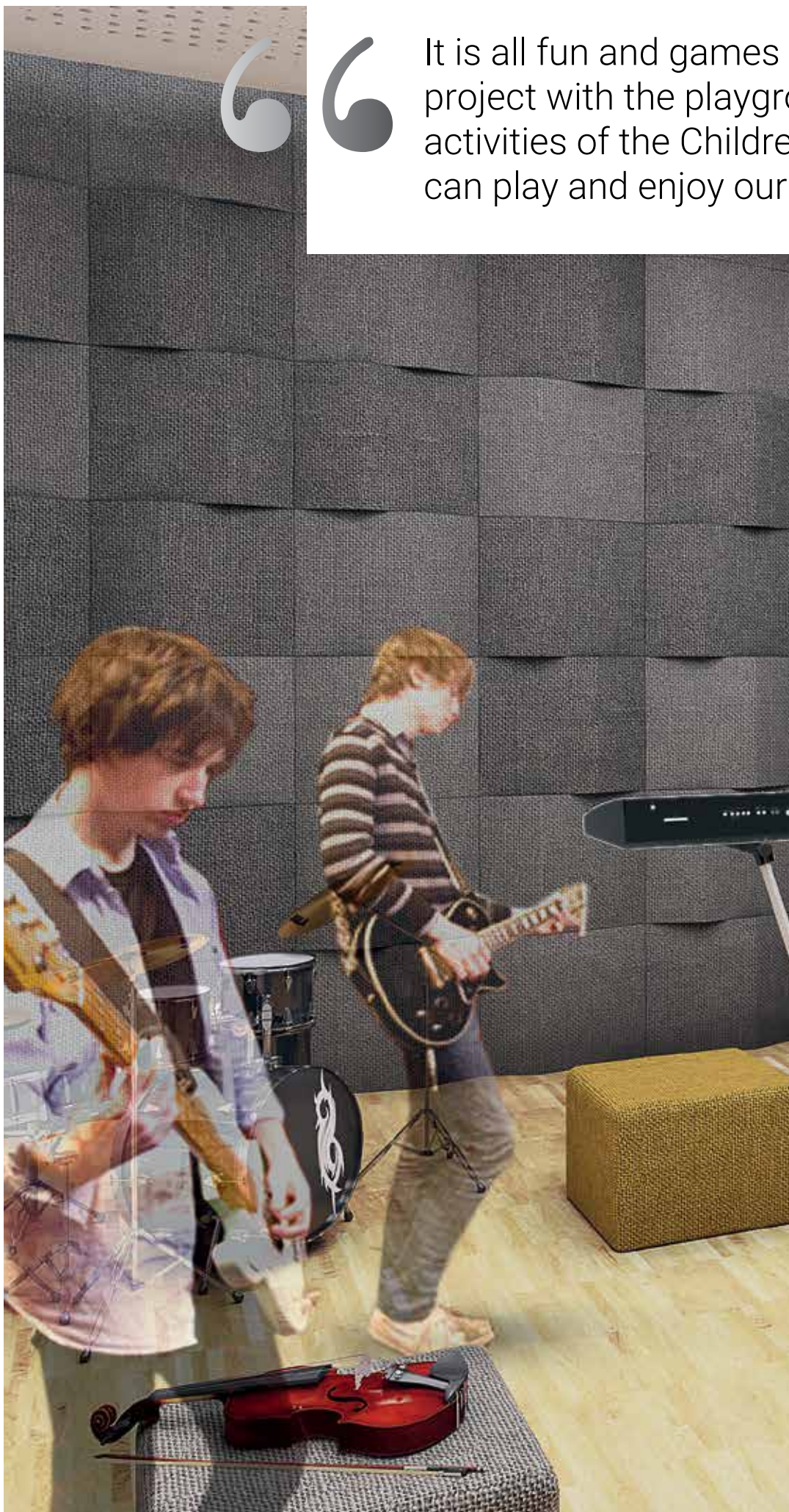


It is fun
to be a child
in here...





“ It is all fun and games to be a child in this project with the playgrounds, hobby rooms and activities of the Children’s Play Club where we can play and enjoy our time freely! ”





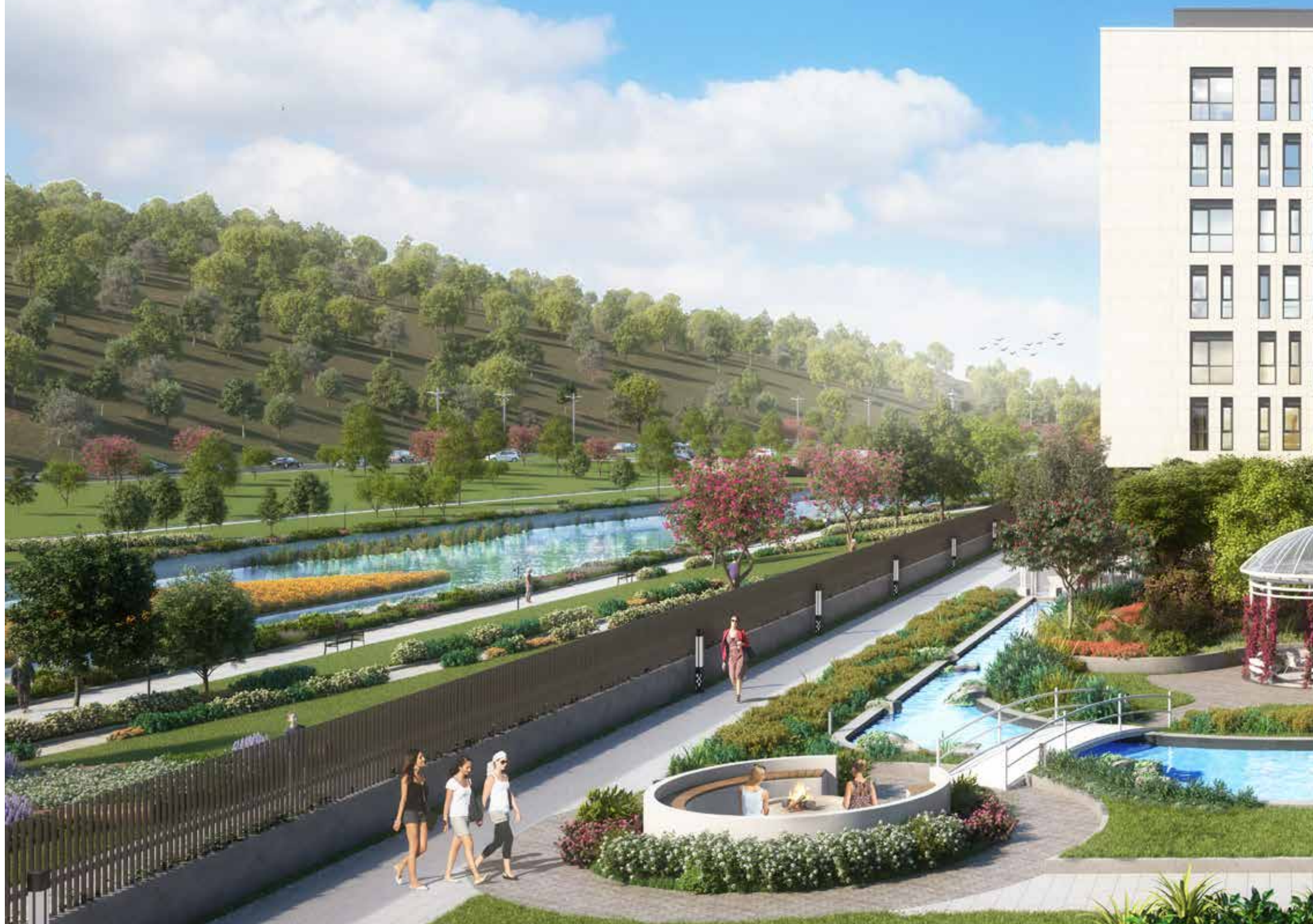
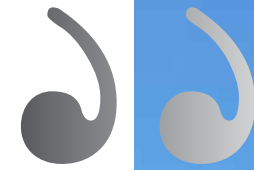


Thanks to the rich life opportunities in here, all we had to do was to choose the correct apartment for us.





This project offers unique living spaces from among the houses with garden or terrace and 1+0, 1+1, 2+1, 3+1, 3.5+1 and 4+1 apartments.





You will experience peace and health with
the fresh air and matchless green of nearby
Belgrad Forest.















PROJECTS

