



DOĞA

WITH THE DIFFERENCE OF DOGA...

Established in 1982, Doga Madencilik is now one of the companies signed important Projects in the sector. Highlighting the human life value by its quality approach applied on the structures, Doga Madencilik continues to serve right to cities with its care on the architect and the aesthetics by producing the difference.

Pruva 34 is one of them..

DOGA

FEEL THE LIFE AHEAD.



FEEL IN PRUVA.
RIGHT NOW.

More than you imagine... High quality of life, smart home technologies and spread sea. Feel the difference of being ahead in Pruva.



THE LIFE RESTARTS FOR YOU.
WELCOME.



LUXURY AND COMFORT. GREEN AND BLUE.

DAY AND NIGHT ARE IN PRUVA 34.

The life you imagined is waiting you in Bakirkoy one of the most popular corners of Istanbul, in Pruva who serves you a life next to the sea.

Coming into life with the unique harmony of residences, apartments and hotel, Pruva will influence you at the first sight by its modern architect with the quality projected deliberately on every detail.

Do not wait more for a luxury, comfort and ahead life with your loved ones. Come and live right now.

- 62.500 m² of sea-faceted zone.
- 16-17 storey 7 residence buildings
- 239 apartments
- Five roomed apartments starting from 310 m²
- Six roomed apartments starting from 363 m²
- 3 / 4 parking spots and 10 m² of stores for every flat
- 1 aparts block
- 2 luxury hotels





YOU WILL GROW YOUR
IMPATIENCE

TO COME BACK
TO HOME.

Privileges of Pruva are not limited with its perfect architecture or its location. You will understand it better when you will see your home.

Wide and fresh living spaced fitted with first class architectural material, balconies, terraces, gardens... You will not desire to leave your home in Pruva, the address of a life on high standards.

A butterfly with vibrant blue and green wings is centered in the image. The wings are spread, showing intricate patterns and textures. A diagonal beam of light, transitioning from dark blue to bright green, passes through the center of the butterfly, creating a sense of depth and highlighting the colors of its wings. The background is a solid dark blue.

YOU ARE IN A MODERN LIFE. BUT NOT FAR FROM THE COLORS OF NATURE...

GREEN TREES, PATIOS,
RECREATION SITES, COLORFUL FLOWERS...

RIGHT NOW.

All the colors of nature are with you in Pruva.
Either in the common areas, and in your garden...



YOU DIVED IN.
CHOICE OF THE PLACE TO COME OUT IS

UP TO YOU.



SEMI OLYMPIC POOL OR,
INDOOR POOL...
RIGHT NOW.



You will live more in Pruva.
In the pool that you deserve, the joy
of swimming in 4 seasons is with you..
Then again, the kids pool is there for
the children.

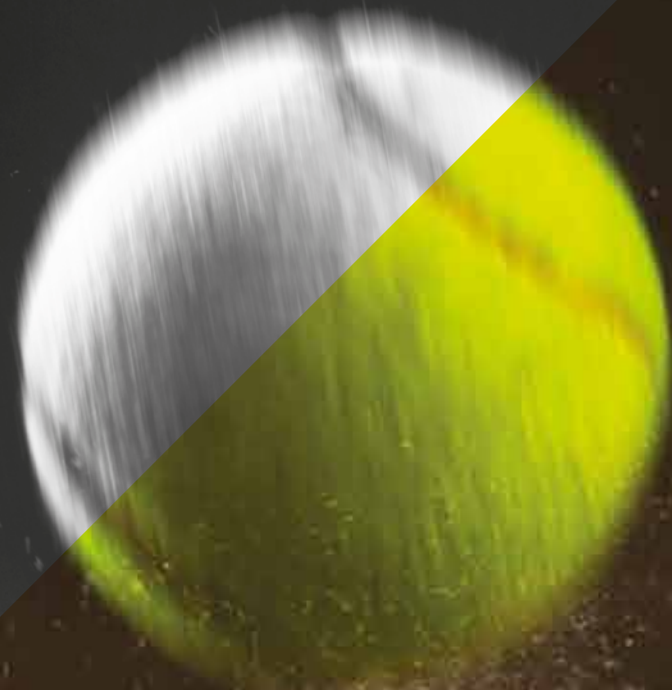


PLAYGROUNDS WITH FULL OF JOY
FOR KIDS...

RIGHT NOW.

Kids are enjoying with their friends. You watch them in a
plain peace. Adults or children, everyone are happier than
ever in Pruva...





YOU WILL WIN A LIFE IN PRUVA THAT,
THERE IS ONLY ONE THING TO BE LOST,
IS A GAME...

TENNIS, BASKETBALL OR FITNESS.
RIGHT NOW.

Let's live the hard concurrence and emotion in the tennis court or on
the basketball field. Let's leave the stress of the day in the Fitness
Center. Pruva is enough for you to a healthy life...

PRUVA
FITNESS



A SMART HOME TECHNOLOGY

THAT IS ALWAYS READY TO DO WHAT FLASHES
THROUGH ON YOUR MIND.

Adjust all the lights in your apartment with smart switches and touch panel. Open and close your smart thermostats and air conditioners with automation system. Even you can manage these from far away with your smart phone. Interact with your visitors through your video intercom system, security, lobby and site management. Or maybe you should come to Pruva34 and explore your smart home on the spot.



A SALON TO CHANGE YOUR LOOK AT YOUR LIFE.
RIGHT NOW.

You'll always be seen the view of sea when
you're watching TV, eating, while you're
spending time with your loved ones,
and in the heart of the city, in life..



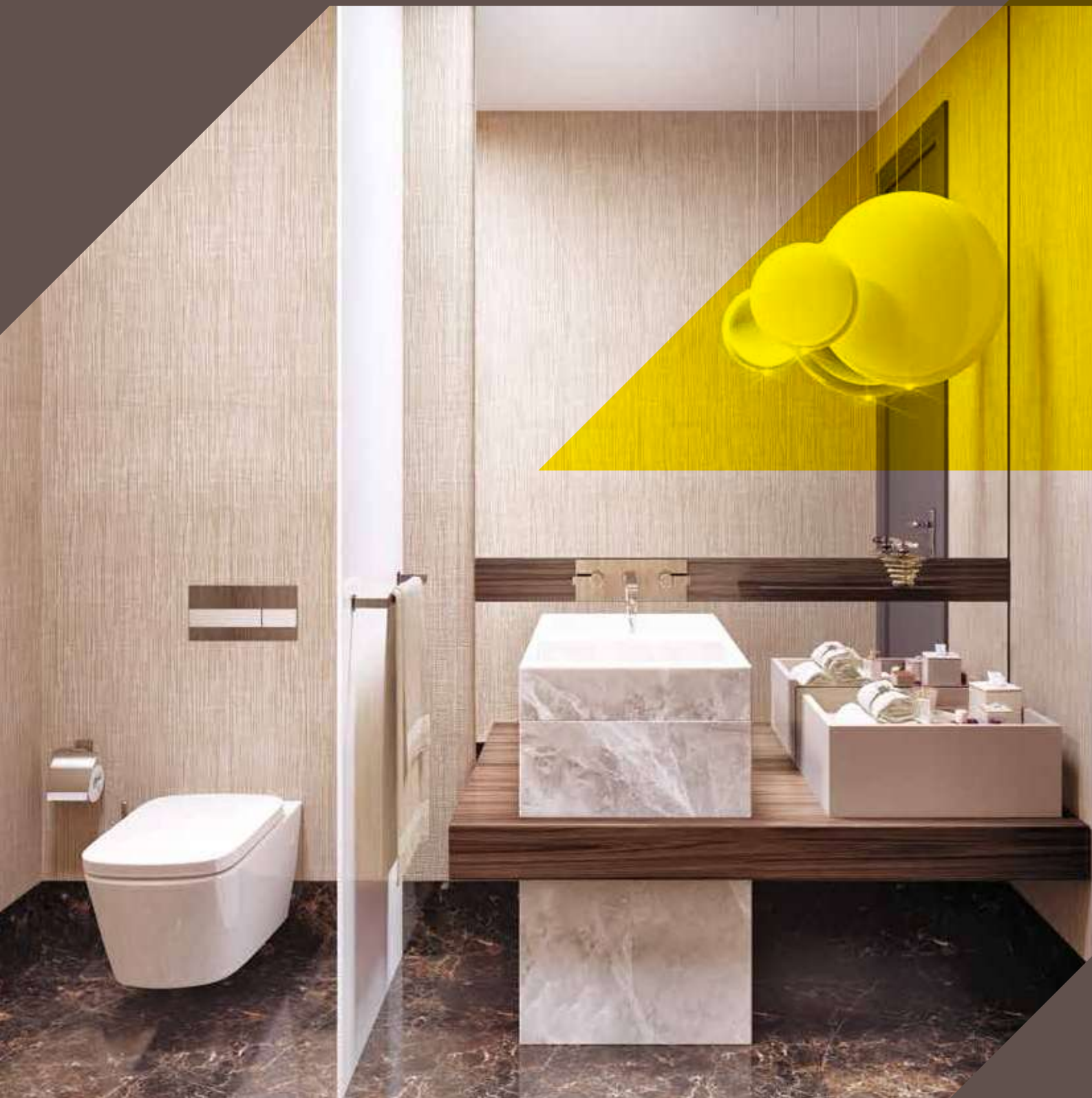
A PRUVA DIFFERENCE IN THE KITCHEN:
ADVANCED EMBEDDED TECHNOLOGY AND SO MORE.
RIGHT NOW.



Can kitchens be famous? Yes, in Pruva.
An attractive and innovative kitchen with
Embedded systems developed by
worldwide popular brands and the
double door refrigerator by Subzero.
Than again, it has a sea view... What can
be a human desire?

IDEA FOR A PERSONAL COMFORT:
PRIVATE BATHROOM FOR EVERYONE.
RIGHT NOW.

There is a private bathroom for everyone in Pruva.
An extraordinary and personal private bathroom
experience...



YOU WILL FIND THE PEACE AT HOME.
RIGHT NOW.

Wide and fresh bedrooms, dressing rooms and so more...



LAYOUT PLAN



A BLOCK

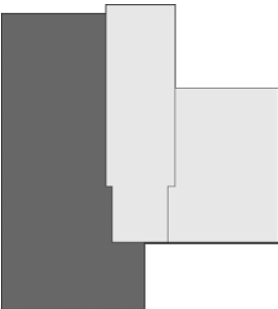
GARDEN FLOOR 5+1 APARTMENT - 337,9 m²



| | |
|-------------------------|----------------------|
| 01 ANTEROOM | 10,9 m ² |
| 02 KITCHEN | 25,6 m ² |
| 03 RECEPTION ROOM | 74,4 m ² |
| 04 LIVING ROOM | 19,9 m ² |
| 05 BEDROOM | 13,6 m ² |
| 06 BATHROOM | 4,1 m ² |
| 07 BEDROOM | 13,6 m ² |
| 08 MASTER BEDROOM | 30,1 m ² |
| 09 MASTER BATHROOM | 5,7 m ² |
| 10 FIRE ESCAPE CORRIDOR | 4,7 m ² |
| 11 BATHROOM | 4,8 m ² |
| 12 BATHROOM | 3,3 m ² |
| 13 STUDIO | 5,2 m ² |
| 14 RESTROOM | 3,7 m ² |
| 15 HALLWAY | 13,0 m ² |
| TOTAL NET AREA: | 232,4 m ² |

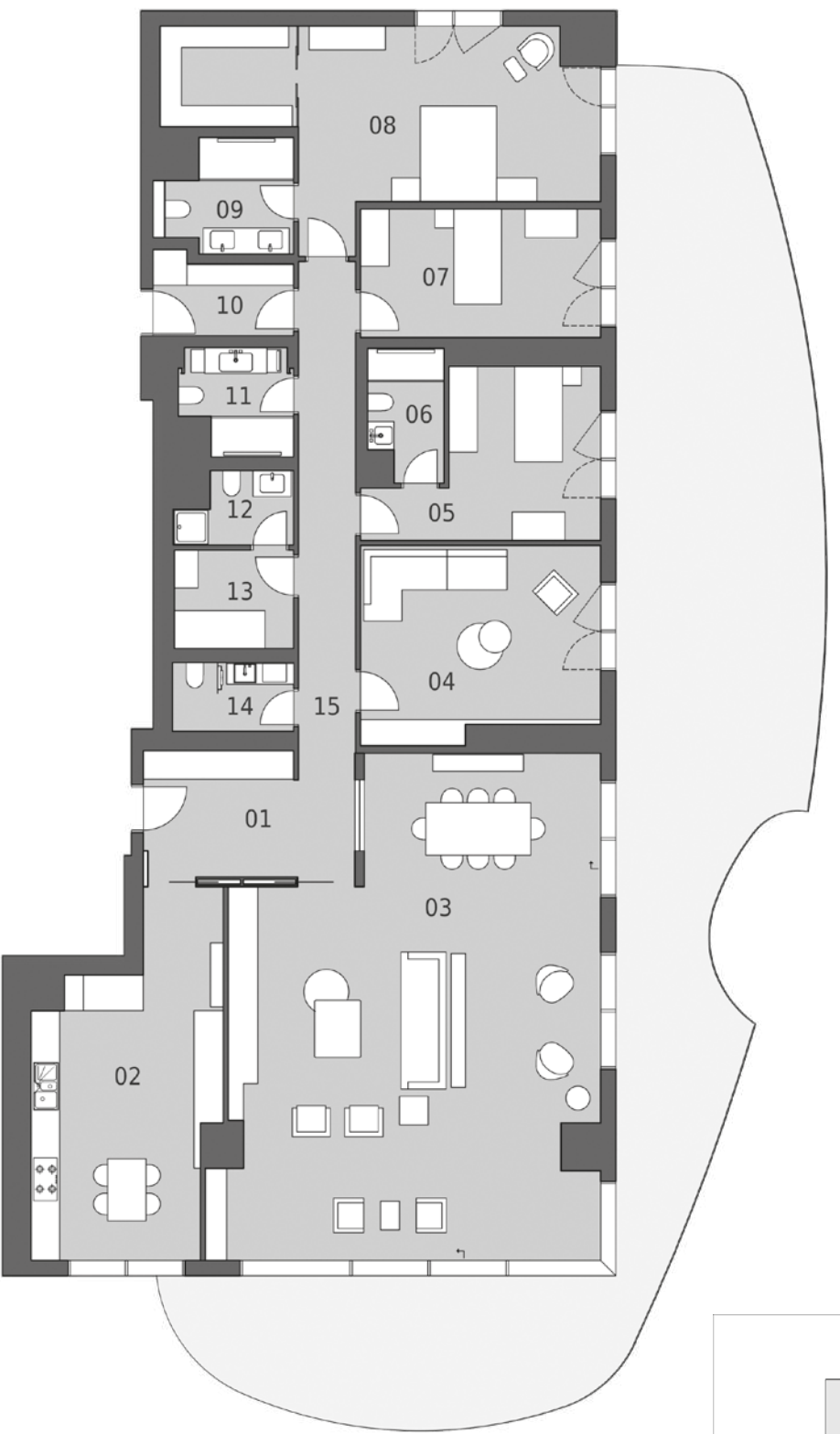
GROSS AREA*: 337,9 m²

* 4 indoor parking areas and ~ 10m² of storage area and social facilities to be provided for each flat are not included in the 'Gross Area'.



A BLOCK

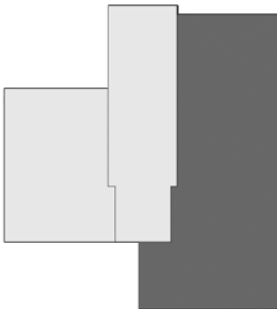
GARDEN FLOOR 5+1 APARTMENT - 337,9 m²



| | |
|-------------------------|----------------------|
| 01 ANTEROOM | 10,9 m ² |
| 02 KITCHEN | 25,6 m ² |
| 03 RECEPTION ROOM | 74,4 m ² |
| 04 LIVING ROOM | 19,9 m ² |
| 05 BEDROOM | 13,6 m ² |
| 06 BATHROOM | 4,1 m ² |
| 07 BEDROOM | 13,6 m ² |
| 08 MASTER BEDROOM | 30,1 m ² |
| 09 MASTER BATHROOM | 5,7 m ² |
| 10 FIRE ESCAPE CORRIDOR | 4,7 m ² |
| 11 BATHROOM | 4,8 m ² |
| 12 BATHROOM | 3,3 m ² |
| 13 STUDIO | 5,2 m ² |
| 14 RESTROOM | 3,7 m ² |
| 15 HALLWAY | 13,0 m ² |
| TOTAL NET AREA: | 232,4 m ² |

GROSS AREA*: 337,9 m²

* 4 indoor parking areas and ~ 10m² of storage area and social facilities to be provided for each flat are not included in the 'Gross Area'.



A BLOCK

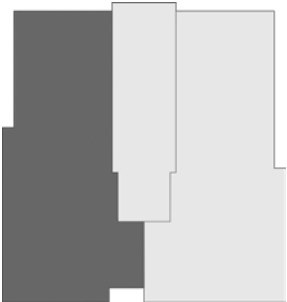
5+1 APARTMENT - 363,4 m²



| | |
|-------------------------|----------------------|
| 01 ANTEROOM | 10,9 m ² |
| 02 KITCHEN | 25,4 m ² |
| 03 RECEPTION ROOM | 58,8 m ² |
| 04 LIVING ROOM | 19,9 m ² |
| 05 BEDROOM | 13,6 m ² |
| 06 BATHROOM | 4,1 m ² |
| 07 BEDROOM | 13,6 m ² |
| 08 MASTER BEDROOM | 30,1 m ² |
| 09 MASTER BATHROOM | 5,6 m ² |
| 10 FIRE ESCAPE CORRIDOR | 4,7 m ² |
| 11 BATHROOM | 4,8 m ² |
| 12 BATHROOM | 3,3 m ² |
| 13 STUDIO | 5,2 m ² |
| 14 RESTROOM | 3,7 m ² |
| 15 HALLWAY | 13,0 m ² |
| 16 BALCONY | 35,8 m ² |
| TOTAL NET AREA: | 252,3 m ² |

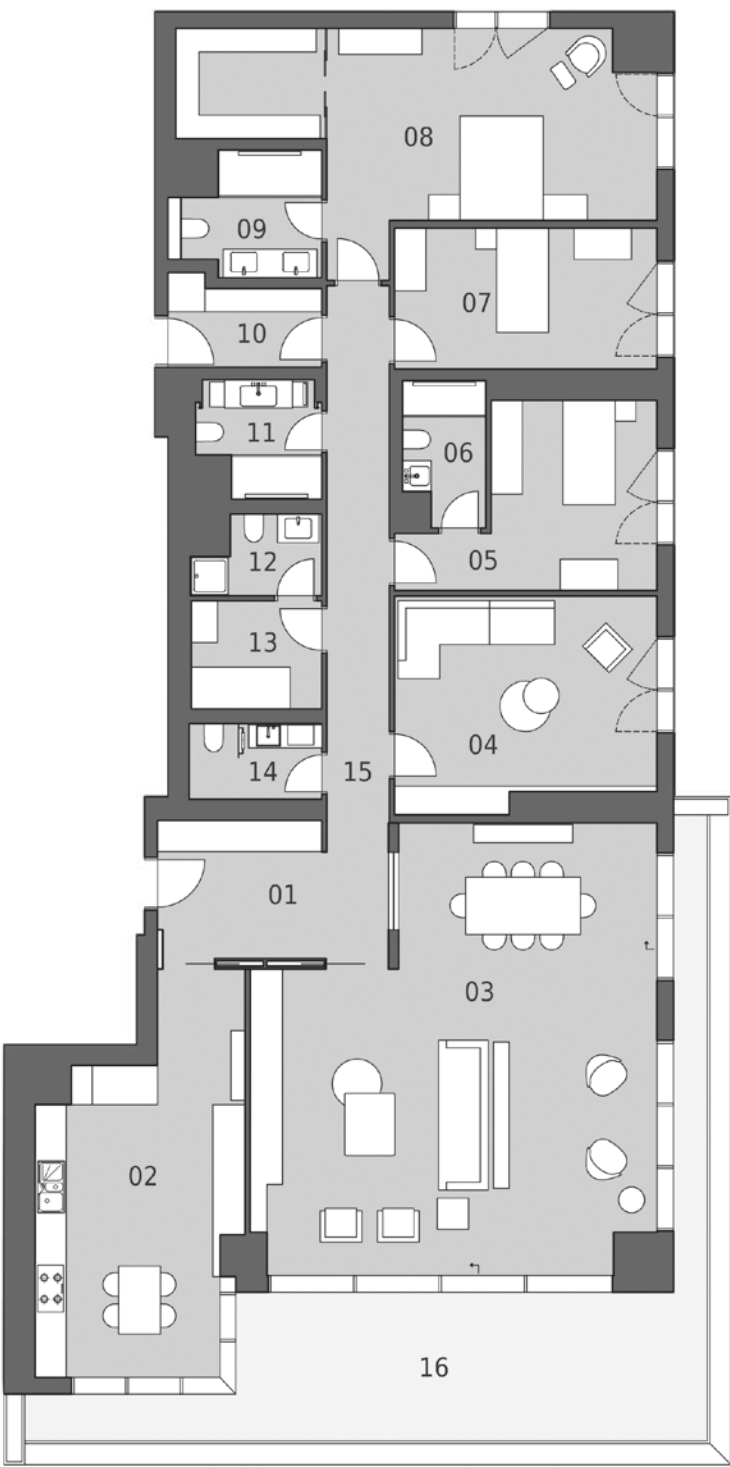
GROSS AREA*: 363,4 m2

* 4 indoor parking areas and ~ 10m² of storage area and social facilities to be provided for each flat are not included in the 'Gross Area'.



A BLOCK

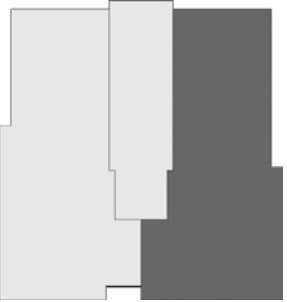
5+1 APARTMENT - 363,4 m²



| | |
|-------------------------|----------------------|
| 01 ANTEROOM | 10,9 m ² |
| 02 KITCHEN | 25,4 m ² |
| 03 RECEPTION ROOM | 58,8 m ² |
| 04 LIVING ROOM | 19,9 m ² |
| 05 BEDROOM | 13,6 m ² |
| 06 BATHROOM | 4,1 m ² |
| 07 BEDROOM | 13,6 m ² |
| 08 MASTER BEDROOM | 30,1 m ² |
| 09 MASTER BATHROOM | 5,6 m ² |
| 10 FIRE ESCAPE CORRIDOR | 4,7 m ² |
| 11 BATHROOM | 4,8 m ² |
| 12 BATHROOM | 3,3 m ² |
| 13 STUDIO | 5,2 m ² |
| 14 RESTROOM | 3,7 m ² |
| 15 HALLWAY | 13,0 m ² |
| 16 BALCONY | 35,8 m ² |
| TOTAL NET AREA: | 252,3 m ² |

GROSS AREA*: 363,4 m2

* 4 indoor parking areas and ~ 10m² of storage area and social facilities to be provided for each flat are not included in the 'Gross Area'.



A BLOCK

5+2 DUPLEX APARTMENT - 718,7 m²

| | | |
|-------------------------|-------|----------------|
| DOWNSTAIRS | | |
| 01 ANTEROOM | 10,9 | m ² |
| 02 KITCHEN | 25,4 | m ² |
| 03 RECEPTION ROOM | 58,8 | m ² |
| 04 LIVING ROOM | 19,9 | m ² |
| 05 BEDROOM | 13,6 | m ² |
| 06 BATHROOM | 4,1 | m ² |
| 07 BEDROOM | 13,6 | m ² |
| 08 MASTER BEDROOM | 30,1 | m ² |
| 09 MASTER BATHROOM | 5,6 | m ² |
| 10 FIRE ESCAPE CORRIDOR | 4,7 | m ² |
| 11 BATHROOM | 4,8 | m ² |
| 12 STORAGE | 1,7 | m ² |
| 13 RESTROOM | 3,7 | m ² |
| 14 HALLWAY | 19,9 | m ² |
| 15 BALCONY | 35,8 | m ² |
| TOTAL NET AREA: | 252,5 | m ² |

GROSS AREA*: 363,4 m²

* 5 indoor parking areas and ~ 10m² of storage area and social facilities to be provided for each flat are not included in the 'Gross Area'.

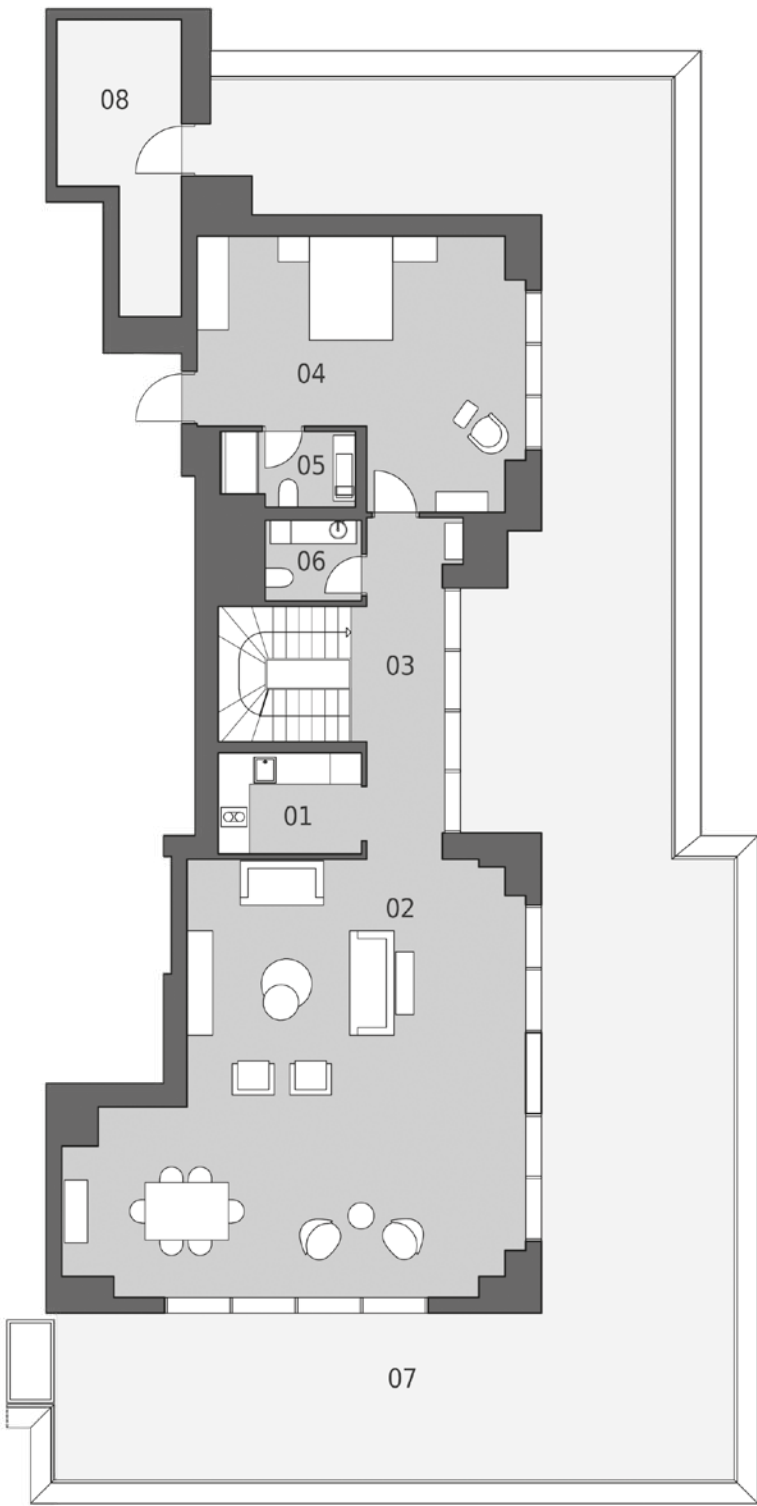


A BLOCK

5+2 DUPLEX APARTMENT - 718,7 m²

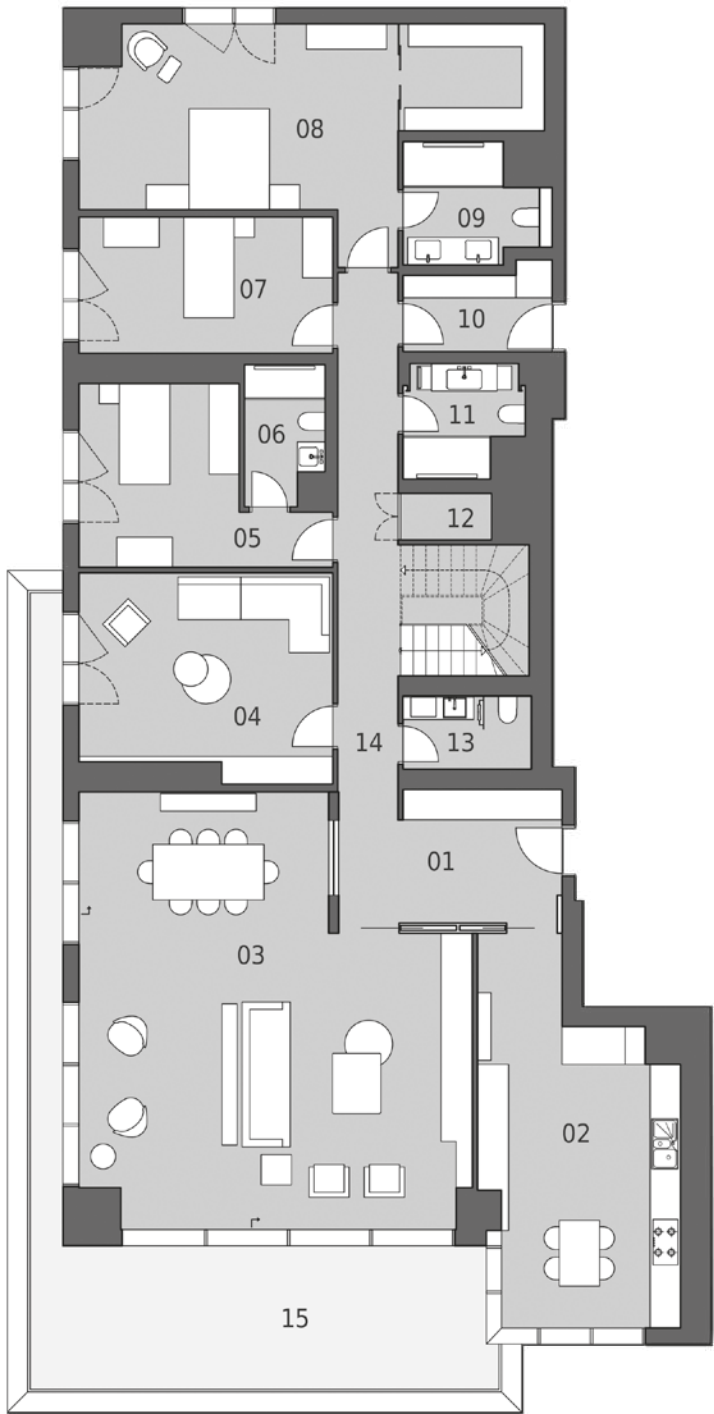
| | |
|-------------------|----------------------|
| UPSTAIRS | |
| 01 KITCHEN | 5,3 m ² |
| 02 RECEPTION ROOM | 58,7 m ² |
| 03 HALLWAY | 10,7 m ² |
| 04 BEDROOM | 27,3 m ² |
| 05 BATHROOM | 3,3 m ² |
| 06 RESTROOM | 2,9 m ² |
| 07 ROOFTOP GARDEN | 137,5 m ² |
| 08 STORAGE | 7,3 m ² |
| TOTAL NET AREA: | 253,1 m ² |

GROSS AREA*: 355,3 m²



A BLOCK

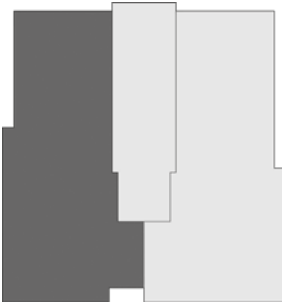
5+2 DUPLEX APARTMENT - 718,7 m²



| | | |
|-------------------------|-------|----------------|
| DOWNSTAIRS | | |
| 01 ANTEROOM | 10,9 | m ² |
| 02 KITCHEN | 25,4 | m ² |
| 03 RECEPTION ROOM | 58,8 | m ² |
| 04 LIVING ROOM | 19,9 | m ² |
| 05 BEDROOM | 13,6 | m ² |
| 06 BATHROOM | 4,1 | m ² |
| 07 BEDROOM | 13,6 | m ² |
| 08 MASTER BEDROOM | 30,1 | m ² |
| 09 MASTER BATHROOM | 5,6 | m ² |
| 10 FIRE ESCAPE CORRIDOR | 4,7 | m ² |
| 11 BATHROOM | 4,8 | m ² |
| 12 STORAGE | 1,7 | m ² |
| 13 RESTROOM | 3,7 | m ² |
| 14 HALLWAY | 19,9 | m ² |
| 15 BALCONY | 35,8 | m ² |
| TOTAL NET AREA: | 252,5 | m ² |

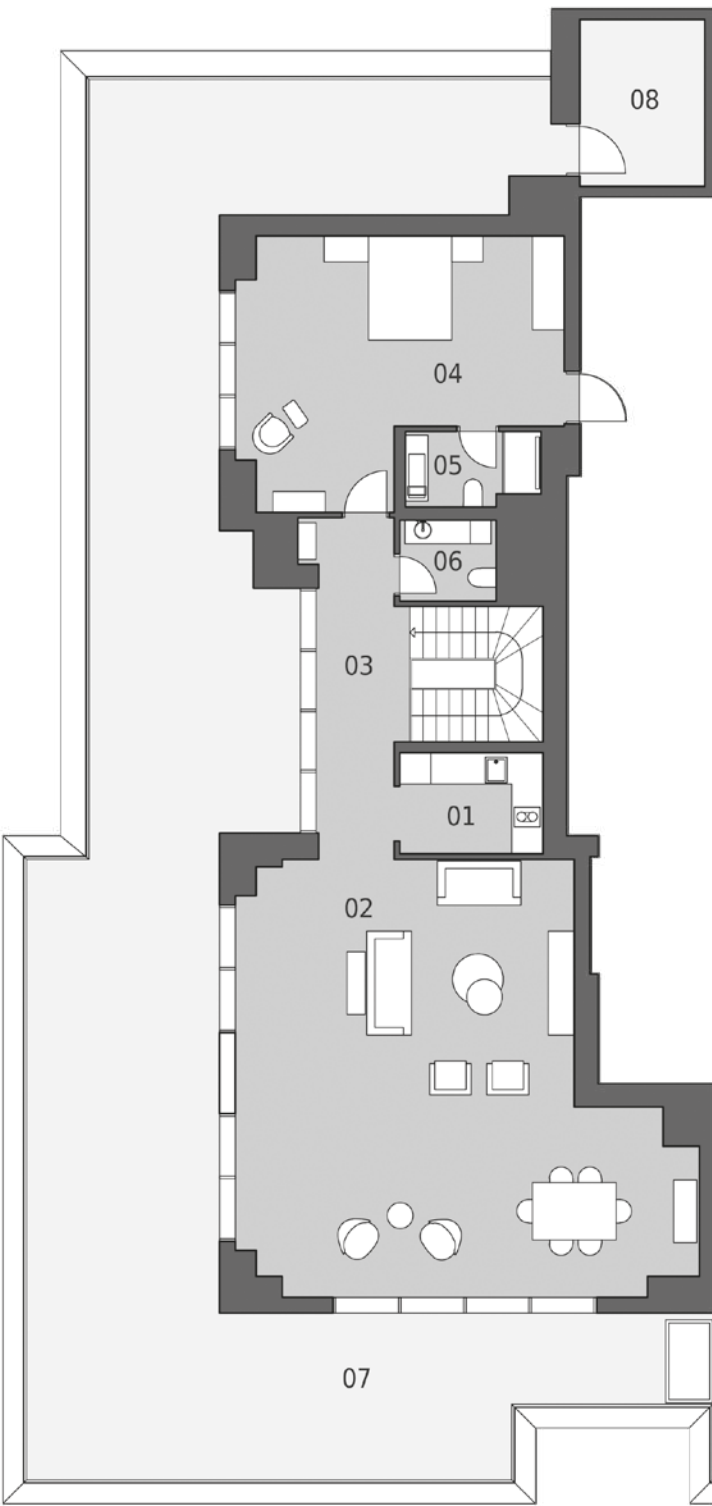
GROSS AREA*: 363,4 m²

* 5 indoor parking areas and ~ 10m² of storage area and social facilities to be provided for each flat are not included in the 'Gross Area'.



A BLOCK

5+2 DUPLEX APARTMENT - 718,7 m²



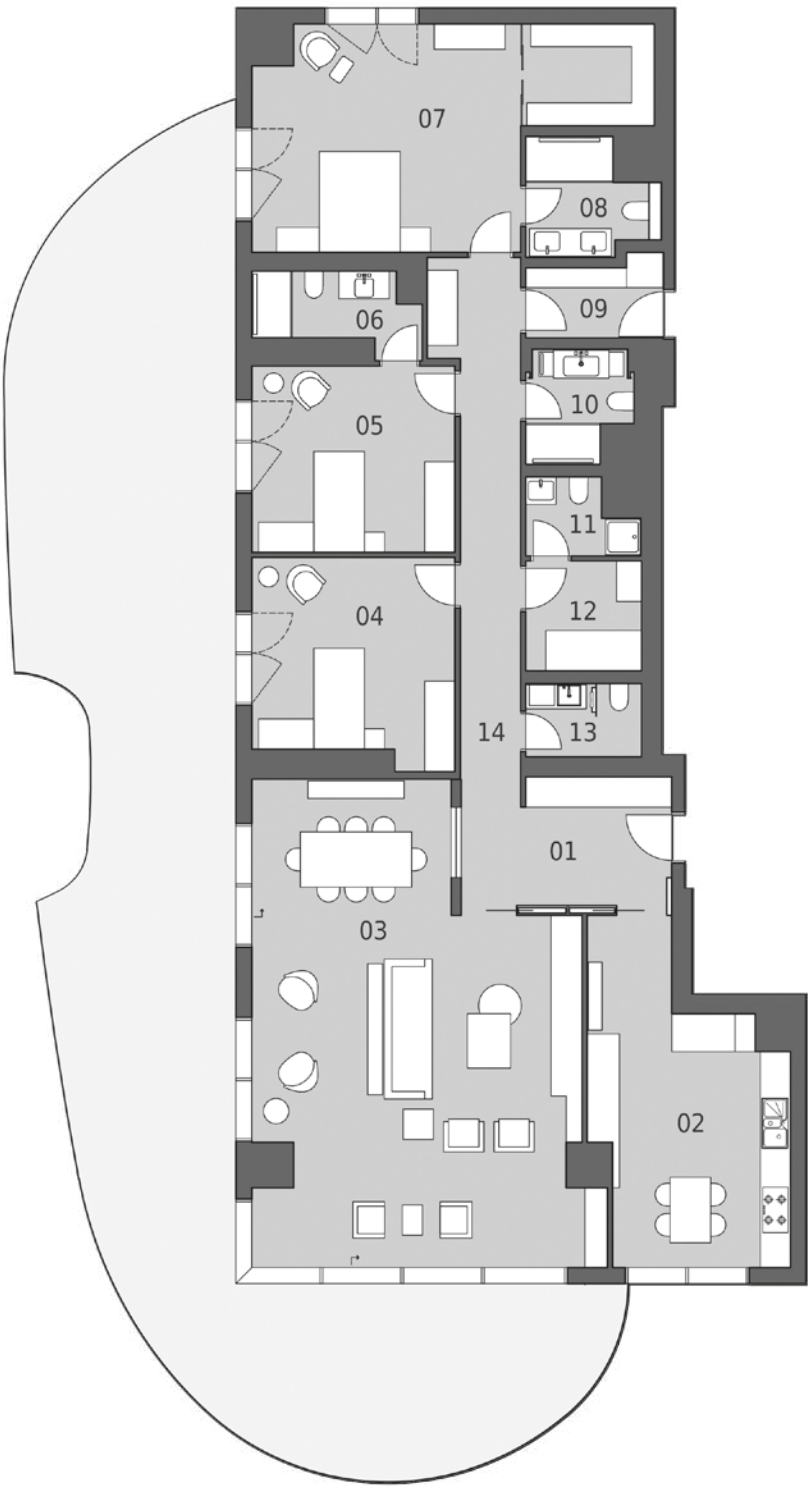
| | |
|-------------------|----------------------|
| UPSTAIRS | |
| 01 KITCHEN | 5,3 m ² |
| 02 RECEPTION ROOM | 58,7 m ² |
| 03 HALLWAY | 10,7 m ² |
| 04 BEDROOM | 27,3 m ² |
| 05 BATHROOM | 3,3 m ² |
| 06 RESTROOM | 2,9 m ² |
| 07 ROOFTOP GARDEN | 137,5 m ² |
| 08 STORAGE | 7,3 m ² |
| TOTAL NET AREA: | 253,1 m ² |

GROSS AREA*: 355,3 m²



B BLOCK

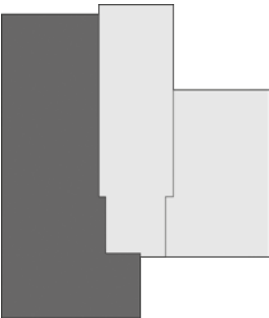
GARDEN FLOOR 4+1 APARTMENT - 290,8 m²



| | |
|-------------------------|----------------------|
| 01 ANTEROOM | 9,8 m ² |
| 02 KITCHEN | 21,9 m ² |
| 03 RECEPTION ROOM | 56,0 m ² |
| 04 BEDROOM | 15,9 m ² |
| 05 BEDROOM | 14,9 m ² |
| 06 BATHROOM | 4,5 m ² |
| 07 MASTER BEDROOM | 28,8 m ² |
| 08 MASTER BATHROOM | 4,9 m ² |
| 09 FIRE ESCAPE CORRIDOR | 4,0 m ² |
| 10 BATHROOM | 4,2 m ² |
| 11 BATHROOM | 2,9 m ² |
| 12 STUDIO | 5,0 m ² |
| 13 RESTROOM | 3,3 m ² |
| 14 HALLWAY | 14,3 m ² |
| TOTAL NET AREA: | 190,3 m ² |

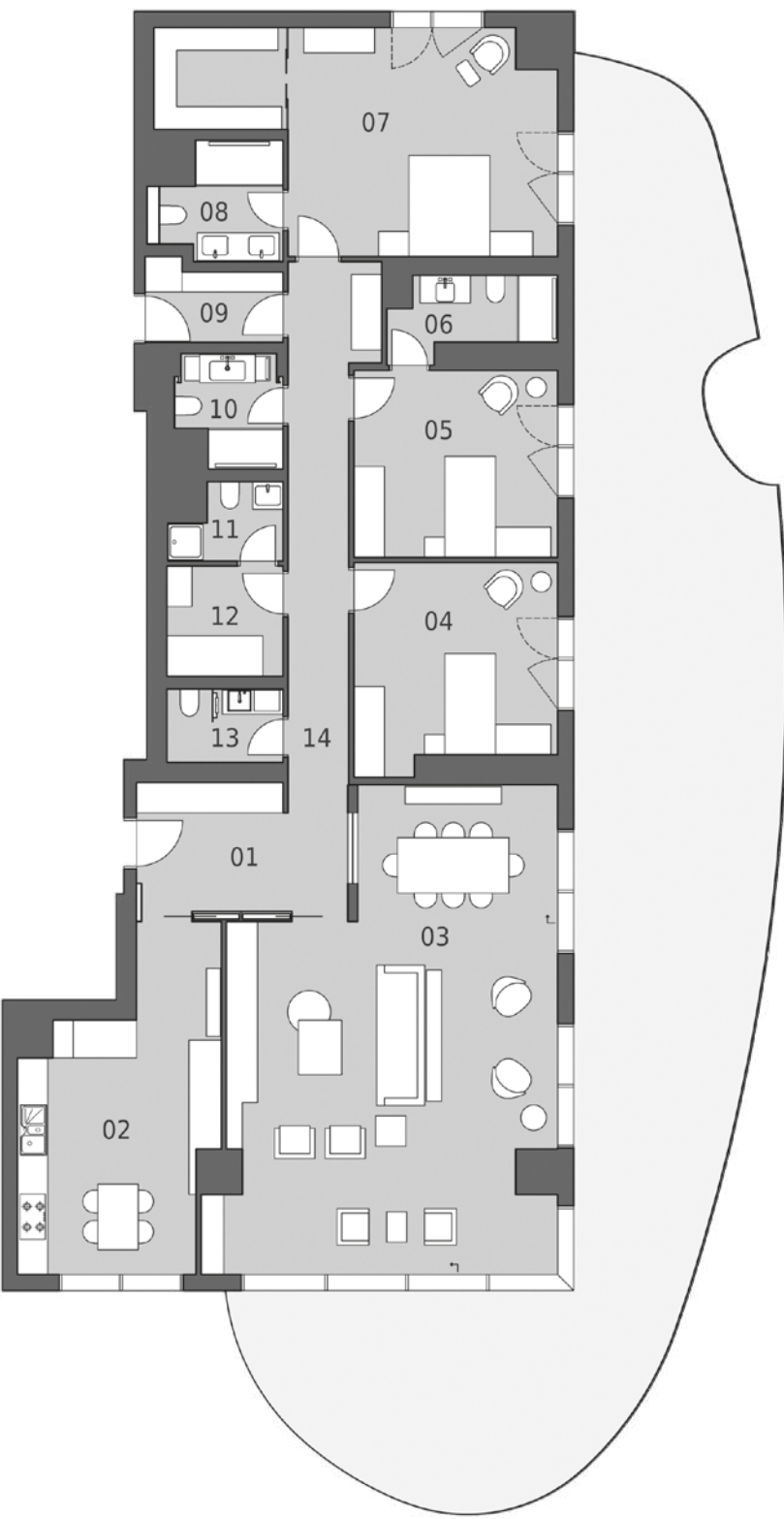
GROSS AREA*: 290,8 m²

* 3 indoor parking areas and ~ 10m² of storage area and social facilities to be provided for each flat are not included in the 'Gross Area'.



B BLOCK

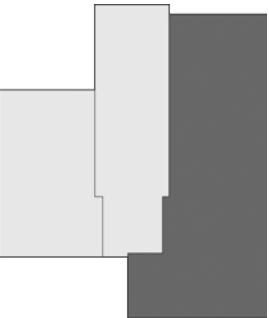
GARDEN FLOOR 4+1 APARTMENT - 290,8 m²



| | |
|-------------------------|----------------------|
| 01 ANTEROOM | 9,8 m ² |
| 02 KITCHEN | 21,9 m ² |
| 03 RECEPTION ROOM | 56,0 m ² |
| 04 BEDROOM | 15,9 m ² |
| 05 BEDROOM | 14,9 m ² |
| 06 BATHROOM | 4,5 m ² |
| 07 MASTER BEDROOM | 28,8 m ² |
| 08 MASTER BATHROOM | 4,9 m ² |
| 09 FIRE ESCAPE CORRIDOR | 4,0 m ² |
| 10 BATHROOM | 4,2 m ² |
| 11 BATHROOM | 2,9 m ² |
| 12 STUDIO | 5,0 m ² |
| 13 RESTROOM | 3,3 m ² |
| 14 HALLWAY | 14,3 m ² |
| TOTAL NET AREA: | 190,3 m ² |

GROSS AREA*: 290,8 m²

* 3 indoor parking areas and ~ 10m² of storage area and social facilities to be provided for each flat are not included in the 'Gross Area'.



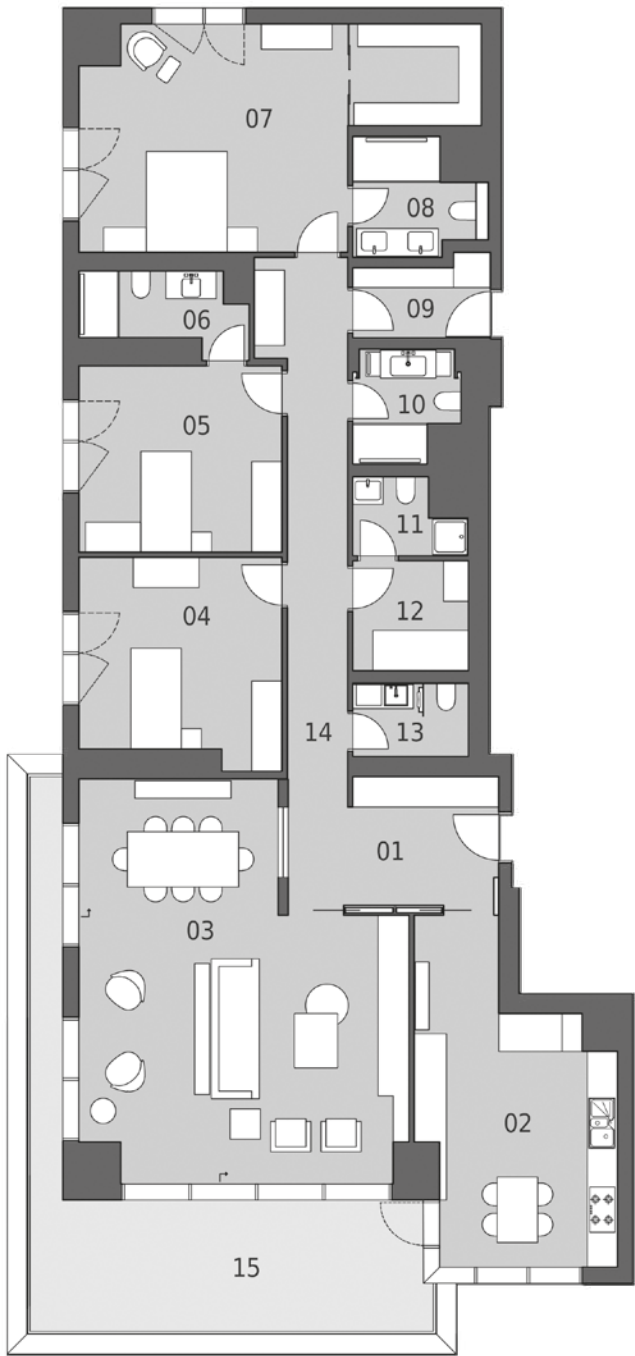
B BLOCK

4+1 APARTMENT - 310,3 m²

| | |
|-------------------------|----------|
| 01 ANTEROOM | 9,8 m² |
| 02 KITCHEN | 21,9 m² |
| 03 RECEPTION ROOM | 44,6 m² |
| 04 BEDROOM | 15,9 m² |
| 05 BEDROOM | 14,9 m² |
| 06 BATHROOM | 4,5 m² |
| 07 MASTER BEDROOM | 28,8 m² |
| 08 MASTER BATHROOM | 4,9 m² |
| 09 FIRE ESCAPE CORRIDOR | 4,0 m² |
| 10 BATHROOM | 4,2 m² |
| 11 BATHROOM | 2,9 m² |
| 12 STUDIO | 5,0 m² |
| 13 RESTROOM | 3,3 m² |
| 14 HALLWAY | 14,3 m² |
| 15 BALCONY | 31,3 m² |
| TOTAL NET AREA: | 210,3 m² |

GROSS AREA*: 310,3 m²

* 3 indoor parking areas and ~ 10m² of storage area and social facilities to be provided for each flat are not included in the 'Gross Area'.



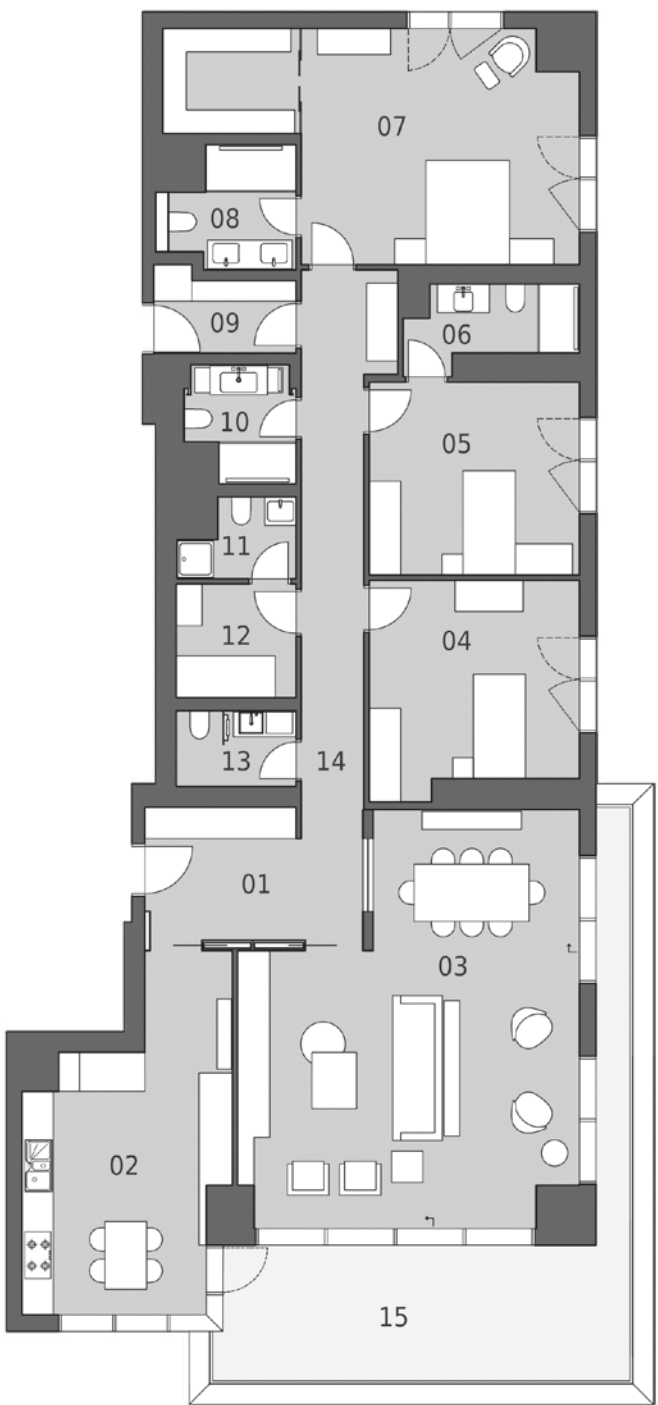
B BLOCK

4+1 APARTMENT - 310,3 m²

| | |
|-------------------------|----------|
| 01 ANTEROOM | 9,8 m² |
| 02 KITCHEN | 21,9 m² |
| 03 RECEPTION ROOM | 44,6 m² |
| 04 BEDROOM | 15,9 m² |
| 05 BEDROOM | 14,9 m² |
| 06 BATHROOM | 4,5 m² |
| 07 MASTER BEDROOM | 28,8 m² |
| 08 MASTER BATHROOM | 4,9 m² |
| 09 FIRE ESCAPE CORRIDOR | 4,0 m² |
| 10 BATHROOM | 4,2 m² |
| 11 BATHROOM | 2,9 m² |
| 12 STUDIO | 5,0 m² |
| 13 RESTROOM | 3,3 m² |
| 14 HALLWAY | 14,3 m² |
| 15 BALCONY | 31,3 m² |
| TOTAL NET AREA: | 210,3 m² |

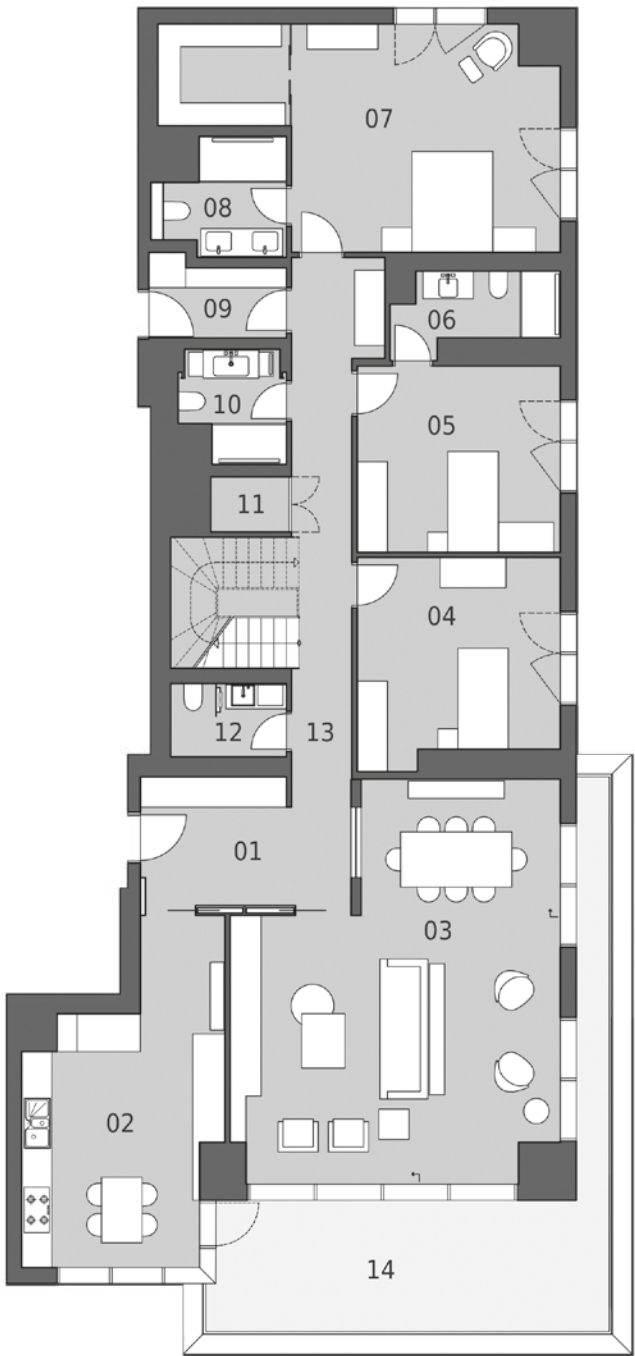
GROSS AREA*: 310,3 m²

* 3 indoor parking areas and ~ 10m² of storage area and social facilities to be provided for each flat are not included in the 'Gross Area'.



B BLOCK

4+2 DUPLEX APARTMENT - 612,5 m²



| | |
|-------------------------|----------|
| DOWNSTAIRS | |
| 01 ANTEROOM | 9,8 m² |
| 02 KITCHEN | 21,9 m² |
| 03 RECEPTION ROOM | 44,6 m² |
| 04 BEDROOM | 15,9 m² |
| 05 BEDROOM | 14,9 m² |
| 06 BATHROOM | 4,5 m² |
| 07 MASTER BEDROOM | 28,8 m² |
| 08 MASTER BATHROOM | 4,9 m² |
| 09 FIRE ESCAPE CORRIDOR | 4,0 m² |
| 10 BATHROOM | 4,2 m² |
| 11 STORAGE | 2,2 m² |
| 12 RESTROOM | 3,3 m² |
| 13 HALLWAY | 20,7 m² |
| 14 BALCONY | 31,3 m² |
| TOTAL NET AREA: | 210,8 m² |

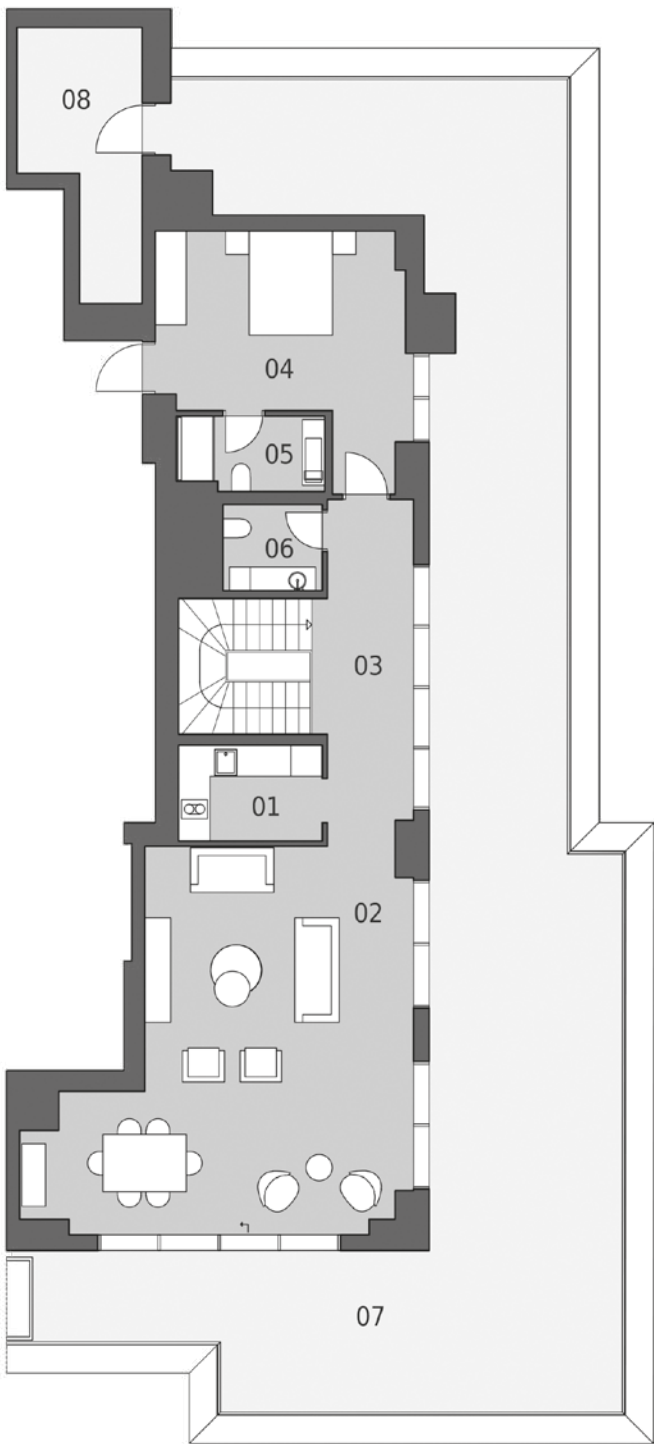
GROSS AREA*: 310,3 m²

* 4 indoor parking areas and ~ 10m² of storage area and social facilities to be provided for each flat are not included in the 'Gross Area'.



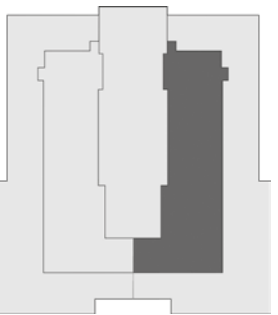
B BLOCK

4+2 DUPLEX APARTMENT - 612,5 m²



| | |
|-------------------|----------|
| UPSTAIRS | |
| 01 KITCHEN | 5,1 m² |
| 02 RECEPTION ROOM | 43,5 m² |
| 03 HALLWAY | 10,9 m² |
| 04 BEDROOM | 18,6 m² |
| 05 BATHROOM | 4,0 m² |
| 06 RESTROOM | 3,1 m² |
| 07 ROOFTOP GARDEN | 116,0 m² |
| 08 STORAGE | 9,7 m² |
| TOTAL NET AREA: | 210,8 m² |

GROSS AREA*: 302,2 m²



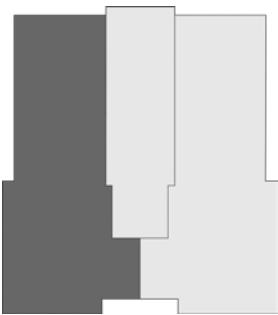
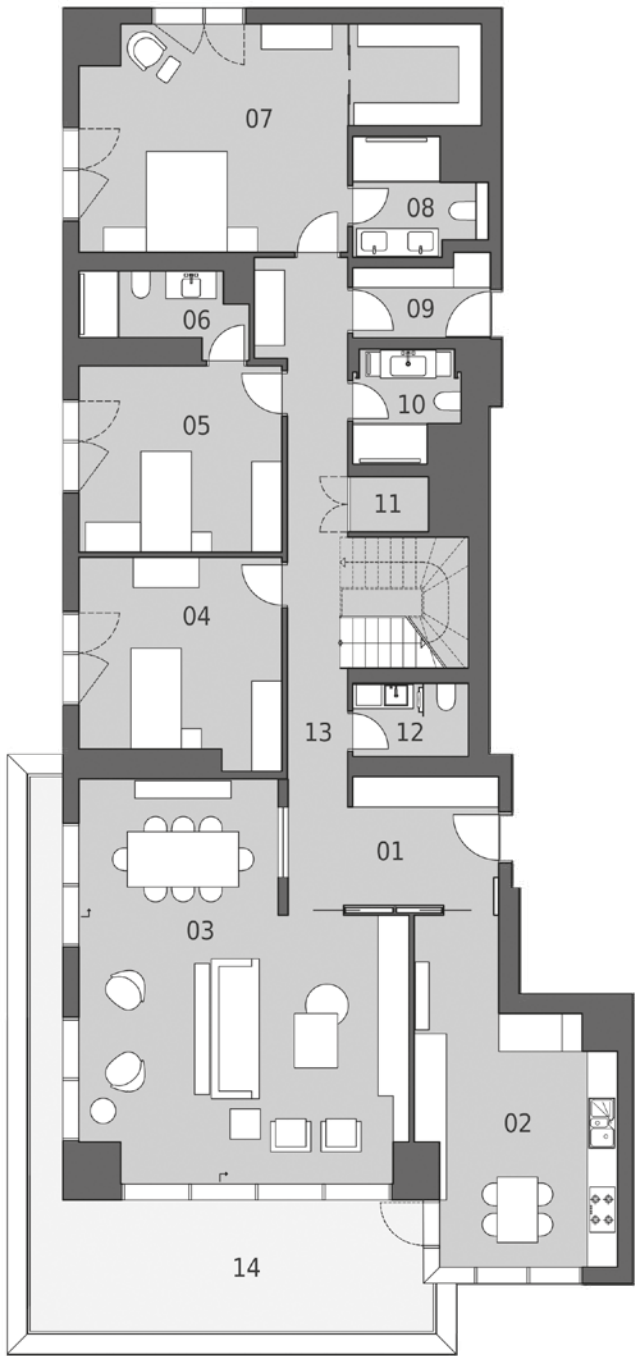
B BLOCK

4+2 DUPLEX APARTMENT - 612,5 m²

| | |
|-------------------------|----------|
| DOWNSTAIRS | |
| 01 ANTEROOM | 9,8 m² |
| 02 KITCHEN | 21,9 m² |
| 03 RECEPTION ROOM | 44,6 m² |
| 04 BEDROOM | 15,9 m² |
| 05 BEDROOM | 14,9 m² |
| 06 BATHROOM | 4,5 m² |
| 07 MASTER BEDROOM | 28,8 m² |
| 08 MASTER BATHROOM | 4,9 m² |
| 09 FIRE ESCAPE CORRIDOR | 4,0 m² |
| 10 BATHROOM | 4,2 m² |
| 11 STORAGE | 2,2 m² |
| 12 RESTROOM | 3,3 m² |
| 13 HALLWAY | 20,7 m² |
| 14 BALCONY | 31,3 m² |
| TOTAL NET AREA: | 210,8 m² |

GROSS AREA*: 310,3 m²

* 4 indoor parking areas and ~ 10m² of storage area and social facilities to be provided for each flat are not included in the 'Gross Area'.

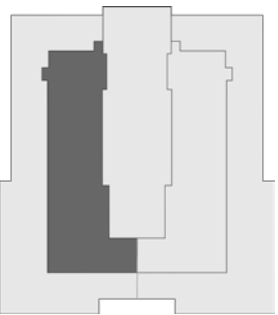
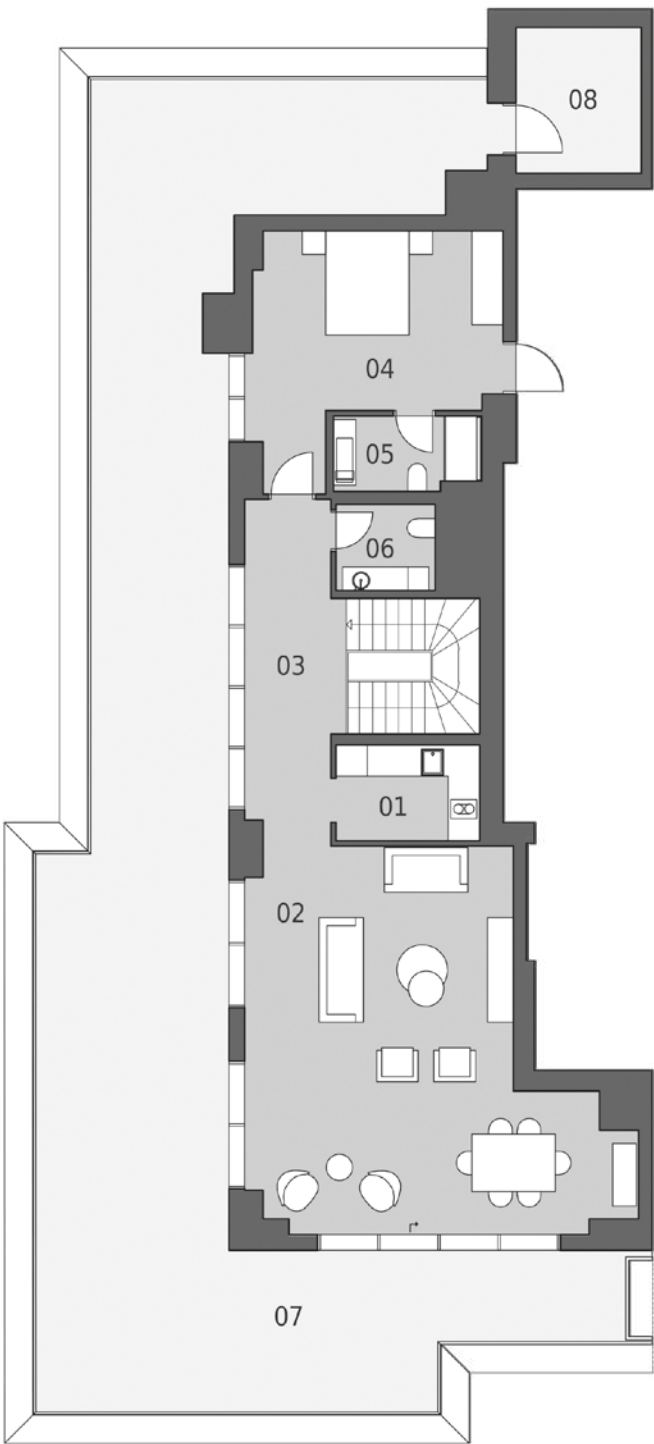


B BLOCK

4+2 DUPLEX APARTMENT - 612,5 m²

| | |
|-------------------|----------|
| UPSTAIRS | |
| 01 KITCHEN | 5,1 m² |
| 02 RECEPTION ROOM | 43,5 m² |
| 03 HALLWAY | 10,9 m² |
| 04 BEDROOM | 18,6 m² |
| 05 BATHROOM | 4,0 m² |
| 06 RESTROOM | 3,1 m² |
| 07 ROOFTOP GARDEN | 116,0 m² |
| 08 STORAGE | 9,7 m² |
| TOTAL NET AREA: | 210,8 m² |

GROSS AREA*: 302,2 m²





PRUVA
34

DOGA